

# Rolled ball screws GY/GW series

## Features

- **Various screw shaft diameters and leads are available for your selection**
  - An optimal size can be selected from a variety of screw shaft diameters and leads, eliminating unnecessary compromise in size selection.
- **Nut types suited for the mounting configuration are available for your selection**
  - Nut types such as the flange type and square type are available for your selection.
- **Free combination specification**
  - The GY series screw shafts and nuts are mutually compatible. KURODA is also accepting orders for each item separately.

### □ Summary of the specifications

Screw shaft diameter	ø8 to ø40 mm
Lead	2 to 40 mm
Accuracy grade	GW series: C7 grade GY series: C10 grade
Axial clearance	Refer to each product specification table.
Shaft end type	Unfinished shaft ends
Product line	Standard product

### □ Options available

Series	Additional shaft-end machining	Surface treatment (Anticorrosive black coating)	Change of grease type	Change of nut direction	LUBSEAL
GW series	○	○	○	○	Refer to each product page.
GY series	○	○	○	○	Refer to each product page.

- The surface treatment is anticorrosive black coating (coating thickness: 1 to 2 µm).
- Contact KURODA regarding the inclusion of grease types other than the standard grease.
- Please refer to the LUBSEAL series and size reference chart or the option specifications on each product's page to determine whether or not LUBSEAL is supported.

### □ Model numbers of GY/GW series

	Series	Shaft diameter	Lead	Number of circuits	Combination		Flange type	Ball recirculation system	Wiper material	Thread direction		Overall screw shaft length	Shaft end type	Thread length		Accuracy grade	Axial clearance
Example model numbers	GY	40	40	B	S	-	H	U	B	R	-	4000	X	3500	-	CA	Y
	GY	8 to 40	2 to 40			-					-	To be shown with a 4-digit number in metric units (mm)	A, X	To be shown with a 4-digit number in metric units (mm)	-	CA	Y
	GW	8 to 25	2 to 40	See specifications.	S	-	See specifications.	See specifications.	See specifications.	R	-				-	C7	Y

• For more details, refer to the specifications and data for each size.

### □ Screw shaft diameter and lead combinations

#### • GW series (Accuracy grade C7)

		Lead (mm)									
		2	2.5	4	5	10	16	20	25	32	40
Screw shaft diameter (mm)	8	M									
	10		M	M		M					
	12			M		M					
	15				M, K	M, K	M	M			
	16									M	
	20				M, K	M, K		M			M
	25				M, K	M, K			M		

The symbols in the above table represent: M: round type nut, K: square type nut

#### • GY series (Accuracy grade C10)

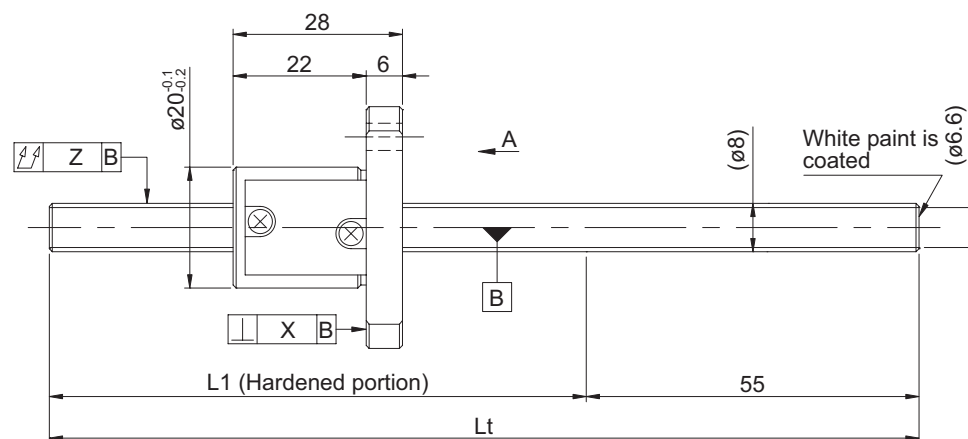
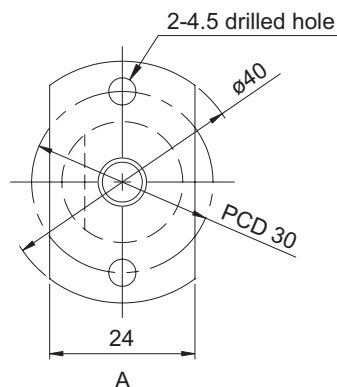
		Lead (mm)											
		2	2.5	4	5	6	8	10	16	20	25	32	40
Screw shaft diameter (mm)	8	M		M	M		M						
	10	M	M	M	M	M		M					
	12	M		M			M	M					
	15				M, K			M, K	M	M			
	16											M	
	20				M, K			M, K		M			M
	25				M, K			M, K			M		
	28					M							
	32							M, K				M	
	36							M		M			
	40							M		M			M

The symbols in the above table represent: M: round type nut, K: square type nut

## GW series (Accuracy grade C7) / GY series (Accuracy grade C10)

### • Ball screw specifications

Shaft diameter (mm) - Lead (mm)	8 - 2	
Number of circuits / Thread direction	3.5 turns 1 circuit / Right-hand	
Ball diameter (mm)	1.5875	
Root diameter (mm)	6.6	
Series	GW	GY
Basic dynamic load rating C (N)	1800	
Basic static load rating C0 (N)	3200	
Accuracy grade / Axial clearance symbol	C7 / Y	C10 / Y
Axial clearance (mm)	0.030 or less	0.050 or less
Preload torque (N·cm)	----	
Recirculation system	Guide plate method	
Wiper	None	
Lubricant	Alvania Grease S2	
Phosphate coating	Nut alone	Screw shaft, nut



Model No. (Unfinished shaft ends)	L1	Lt	Maximum stroke (L1 - nut length)
GW0802GS-HGNR-0200A	145	200	117
GW0802GS-HGNR-0400A	345	400	317
GY0802GS-HGNR-0200A	145	200	117
GY0802GS-HGNR-0400A	345	400	317

• At the time of delivery, grease is inserted inside of the nut, with rust-preventive oil also applied. Before and during use, apply lubricant where appropriate.

## Screw shaft diameter ø8, Lead 2 (Round nut)

### • Shaft end finish type

Standard rolled ball screws are available with KUROMA's recommended shaft end finish types for each size.

Other than KUROMA's recommended shaft end finish types described below, additional machining including keyways, tapped holes, and D-cut processing are also available if requested. Please contact KUROMA with your orders. Model examples for finished shaft ends are described below.

**Model example:** Unfinished shaft ends (See left figure) → Finished shaft ends

GW0802GS-HGNR-0400A → GW0802GS-HGNR-0382X0336-CAY

↳ Thread length  
↳ Overall screw shaft length

Supported end	Fixed end
Applicable supported end support unit	Applicable fixed end support unit
BUK-6S (Square type)	BUK-6 (Square type)
BUM-6S (Round type)	BUM-6, BUM-6F (Round type)

### • Optional specifications

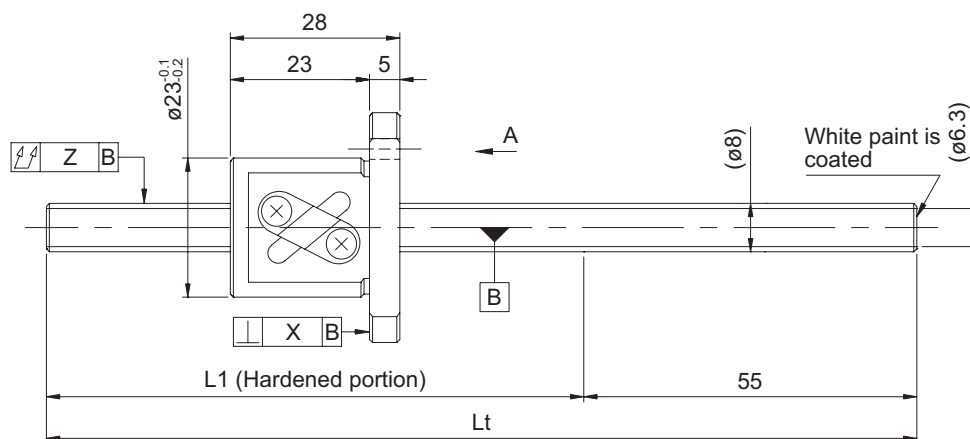
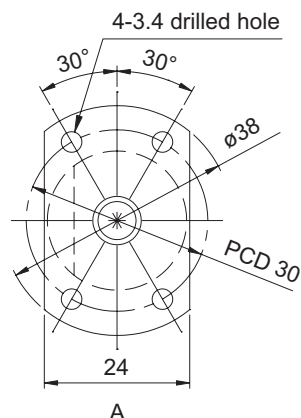
• Anticorrosive black coating (coating thickness: 1 to 2 μm) is available.

Lead accuracy	Accuracy of each part		Mass (kg)
Cumulative lead error	X	Z	
0.05/300	0.020	0.040	0.17
		0.120	0.25
0.21/300	---	0.080	0.17
		0.200	0.25

## GY series (Accuracy grade C10)

### • Ball screw specifications

Shaft diameter (mm) - Lead (mm)	8 - 4
Number of circuits / Thread direction	2.5 turns 1 circuit / Right-hand
Ball diameter (mm)	2.000
Root diameter (mm)	6.3
Series	GY
Basic dynamic load rating C (N)	1900
Basic static load rating C0 (N)	3100
Accuracy grade / Axial clearance symbol	C10 / Y
Axial clearance (mm)	0.050 or less
Preload torque (N·cm)	----
Recirculation system	Tube method
Wiper	None
Lubricant	Alvania Grease S2
Phosphate coating	Screw shaft, nut



Model No. (Unfinished shaft ends)	L1	Lt	Maximum stroke (L1 - nut length)
GY0804DS-HANR-0200A	145	200	117
GY0804DS-HANR-0400A	345	400	317

• At the time of delivery, grease is inserted inside of the nut, with rust-preventive oil also applied.  
Before and during use, apply lubricant where appropriate.

## Screw shaft diameter ø8, Lead 4 (Round nut)

### • Shaft end finish type

Standard rolled ball screws are available with KURODA's recommended shaft end finish types for each size.

Other than KURODA's recommended shaft end finish types described below, additional machining including keyways, tapped holes, and D-cut processing are also available if requested. Please contact KURODA with your orders. Model examples for finished shaft ends are described below.

**Model example:** Unfinished shaft ends (See left figure) → Finished shaft ends

GY0804DS-HANR-0400A → GY0804DS-HANR-0382X0336-CAY

Thread length  
Overall screw shaft length

Supported end	Fixed end
Applicable supported end support unit	Applicable fixed end support unit
BUK-6S (Square type)	BUK-6 (Square type)
BUM-6S (Round type)	BUM-6, BUM-6F (Round type)

### • Optional specifications

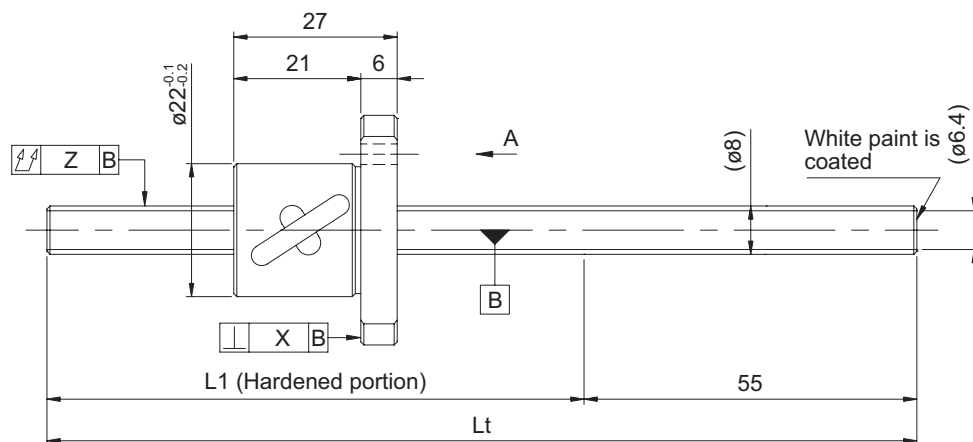
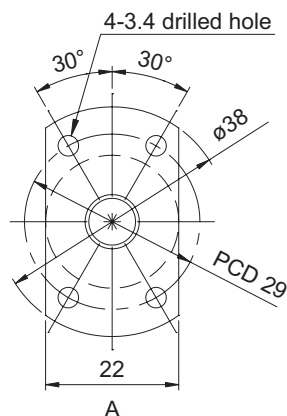
• Anticorrosive black coating (coating thickness: 1 to 2 μm) is available.

Lead accuracy	Accuracy of each part		Mass (kg)
Cumulative lead error	X	Z	
0.21/300	---	0.080	0.18
		0.200	0.26

## GY series (Accuracy grade C10)

### • Ball screw specifications

Shaft diameter (mm) - Lead (mm)	8 - 5
Number of circuits / Thread direction	2.5 turns 1 circuit / Right-hand
Ball diameter (mm)	2.000
Root diameter (mm)	6.4
Series	GY
Basic dynamic load rating C (N)	1900
Basic static load rating C0 (N)	3100
Accuracy grade / Axial clearance symbol	C10 / Y
Axial clearance (mm)	0.050 or less
Preload torque (N·cm)	----
Recirculation system	Tube method
Wiper	None
Lubricant	Alvania Grease S2
Phosphate coating	Screw shaft, nut



Model No. (Unfinished shaft ends)	L1	Lt	Maximum stroke (L1 - nut length)
GY0805DS-HUNR-0200A	145	200	118
GY0805DS-HUNR-0400A	345	400	318

• At the time of delivery, grease is inserted inside of the nut, with rust-preventive oil also applied.  
Before and during use, apply lubricant where appropriate.

## Screw shaft diameter ø8, Lead 5 (Round nut)

### • Shaft end finish type

Standard rolled ball screws are available with KUROMA's recommended shaft end finish types for each size.

Other than KUROMA's recommended shaft end finish types described below, additional machining including keyways, tapped holes, and D-cut processing are also available if requested. Please contact KUROMA with your orders. Model examples for finished shaft ends are described below.

**Model example:** Unfinished shaft ends (See left figure) → Finished shaft ends

GY0805DS-HUNR-0400A → GY0805DS-HUNR-0382X0336-CAY

↳ Thread length  
↳ Overall screw shaft length

Supported end	Fixed end
Applicable supported end support unit	Applicable fixed end support unit
BUK-6S (Square type)	BUK-6 (Square type)
BUM-6S (Round type)	BUM-6, BUM-6F (Round type)

### • Optional specifications

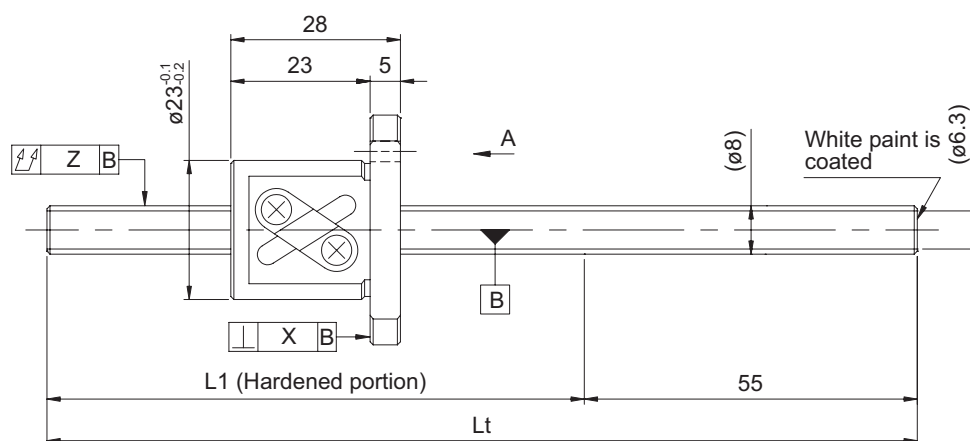
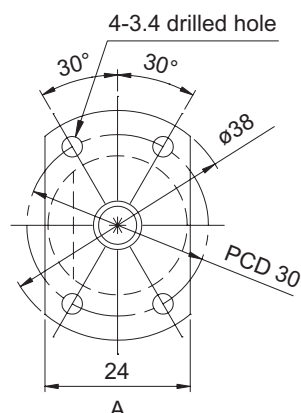
• Anticorrosive black coating (coating thickness: 1 to 2 μm) is available.

Lead accuracy	Accuracy of each part		Mass (kg)
Cumulative lead error	X	Z	
0.21/300	---	0.080	0.17
		0.200	0.25

## GY series (Accuracy grade C10)

### • Ball screw specifications

Shaft diameter (mm) - Lead (mm)	8 - 8
Number of circuits / Thread direction	1.5 turns 1 circuit / Right-hand
Ball diameter (mm)	2.000
Root diameter (mm)	6.3
Series	GY
Basic dynamic load rating C (N)	1200
Basic static load rating C0 (N)	1800
Accuracy grade / Axial clearance symbol	C10 / Y
Axial clearance (mm)	0.050 or less
Preload torque (N·cm)	----
Recirculation system	Tube method
Wiper	None
Lubricant	Alvania Grease S2
Phosphate coating	Screw shaft, nut



Model No. (Unfinished shaft ends)	L1	Lt	Maximum stroke (L1 - nut length)
GY0808AS-HANR-0200A	145	200	117
GY0808AS-HANR-0400A	345	400	317

• At the time of delivery, grease is inserted inside of the nut, with rust-preventive oil also applied.  
Before and during use, apply lubricant where appropriate.

## Screw shaft diameter ø8, Lead 8 (Round nut)

### • Shaft end finish type

Standard rolled ball screws are available with KURODA's recommended shaft end finish types for each size.

Other than KURODA's recommended shaft end finish types described below, additional machining including keyways, tapped holes, and D-cut processing are also available if requested. Please contact KURODA with your orders. Model examples for finished shaft ends are described below.

**Model example:** Unfinished shaft ends (See left figure) → Finished shaft ends

GY0808AS-HANR-0400A → GY0808AS-HANR-0382X0336-CAY

→ Thread length  
→ Overall screw shaft length

Supported end	Fixed end
Applicable supported end support unit	Applicable fixed end support unit
BUK-6S (Square type)	BUK-6 (Square type)
BUM-6S (Round type)	BUM-6, BUM-6F (Round type)

### • Optional specifications

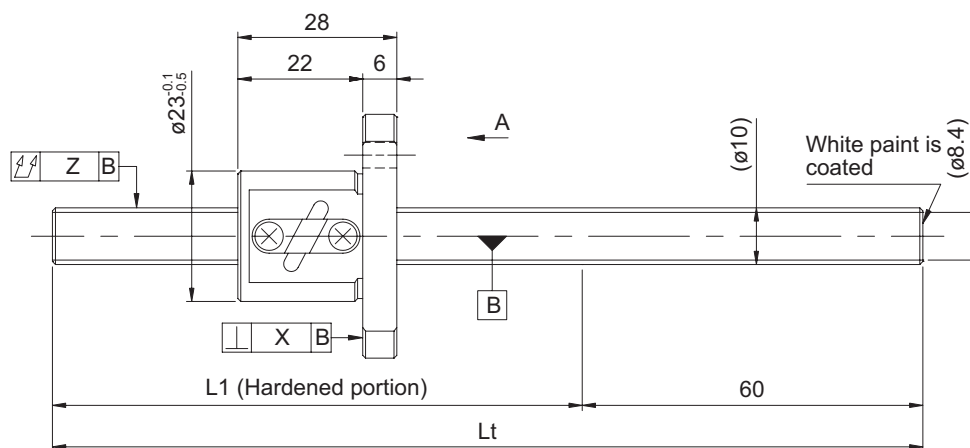
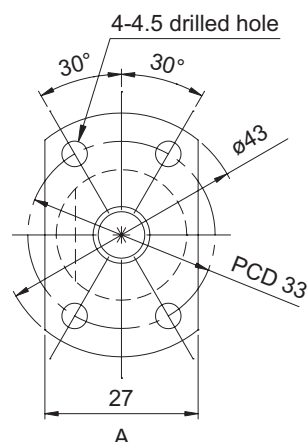
• Anticorrosive black coating (coating thickness: 1 to 2 μm) is available.

Lead accuracy	Accuracy of each part		Mass (kg)
Cumulative lead error	X	Z	
0.21/300	---	0.080	0.18
		0.200	0.26

## GY series (Accuracy grade C10)

### • Ball screw specifications

Shaft diameter (mm) - Lead (mm)	10 - 2
Number of circuits / Thread direction	2.5 turns 1 circuit / Right-hand
Ball diameter (mm)	1.5875
Root diameter (mm)	8.4
Series	GY
Basic dynamic load rating C (N)	1700
Basic static load rating C0 (N)	3000
Accuracy grade / Axial clearance symbol	C10 / Y
Axial clearance (mm)	0.050 or less
Preload torque (N·cm)	----
Recirculation system	Tube method
Wiper	None
Lubricant	Alvania Grease S2
Phosphate coating	Screw shaft, nut



Model No. (Unfinished shaft ends)	L1	Lt	Maximum stroke (L1 - nut length)
GY1002DS-HANR-0400A	340	400	312
GY1002DS-HANR-0600A	540	600	512

• At the time of delivery, grease is inserted inside of the nut, with rust-preventive oil also applied.  
Before and during use, apply lubricant where appropriate.

## Screw shaft diameter $\phi 10$ , Lead 2 (Round nut)

### • Shaft end finish type

Standard rolled ball screws are available with KUROMA's recommended shaft end finish types for each size.

Other than KUROMA's recommended shaft end finish types described below, additional machining including keyways, tapped holes, and D-cut processing are also available if requested. Please contact KUROMA with your orders. Model examples for finished shaft ends are described below.

**Model example:** Unfinished shaft ends (See left figure) → Finished shaft ends

GY1002DS-HANR-0600A → GY1002DS-HANR-0585X0531-CAY

Thread length  
Overall screw shaft length

Supported end	Fixed end
Applicable supported end support unit	Applicable fixed end support unit
BUK-6S (Square type)	BUK-8, BUK-8F (Square type)
BUM-6S (Round type)	BUM-8, BUM-8F (Round type)

### • Optional specifications

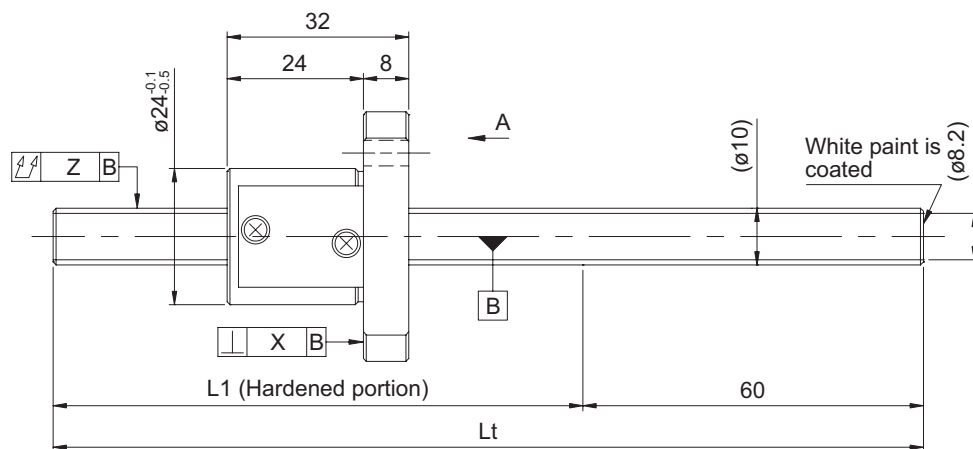
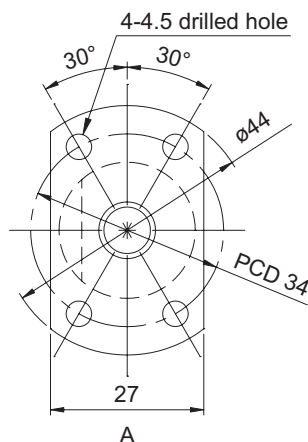
• Anticorrosive black coating (coating thickness: 1 to 2  $\mu\text{m}$ ) is available.

Lead accuracy	Accuracy of each part		Mass (kg)
Cumulative lead error	X	Z	
0.21/300	---	0.150	0.35
		0.240	0.48

## GW series (Accuracy grade C7) / GY series (Accuracy grade C10)

### • Ball screw specifications

Shaft diameter (mm) - Lead (mm)	10 - 2.5	
Number of circuits / Thread direction	3.5 turns 1 circuit / Right-hand	
Ball diameter (mm)	2.000	
Root diameter (mm)	8.2	
Series	GW	GY
Basic dynamic load rating C (N)	2600	
Basic static load rating C0 (N)	5200	
Accuracy grade / Axial clearance symbol	C7 / Y	C10 / Y
Axial clearance (mm)	0.030 or less	0.050 or less
Preload torque (N·cm)	----	
Recirculation system	Guide plate method	
Wiper	None	
Lubricant	Alvania Grease S2	
Phosphate coating	Nut alone	Screw shaft, nut



Model No. (Unfinished shaft ends)	L1	Lt	Maximum stroke (L1 - nut length)
GW102FGS-HGNR-0400A	340	400	308
GW102FGS-HGNR-0600A	540	600	508
GY102FGS-HGNR-0400A	340	400	308
GY102FGS-HGNR-0600A	540	600	508

• At the time of delivery, grease is inserted inside of the nut, with rust-preventive oil also applied. Before and during use, apply lubricant where appropriate.

## Screw shaft diameter $\phi 10$ , Lead 2.5 (Round nut)

### • Shaft end finish type

Standard rolled ball screws are available with KUROMA's recommended shaft end finish types for each size.

Other than KUROMA's recommended shaft end finish types described below, additional machining including keyways, tapped holes, and D-cut processing are also available if requested. Please contact KUROMA with your orders. Model examples for finished shaft ends are described below.

**Model example:** Unfinished shaft ends (See left figure) → Finished shaft ends

GY102FGS-HGNR-0600A → GY102FGS-HGNR-0585X0531-CAY

Thread length  
Overall screw shaft length

Supported end	Fixed end
Applicable supported end support unit	Applicable fixed end support unit
BUK-6S (Square type)	BUK-8, BUK-8F (Square type)
BUM-6S (Round type)	BUM-8, BUM-8F (Round type)

### • Optional specifications

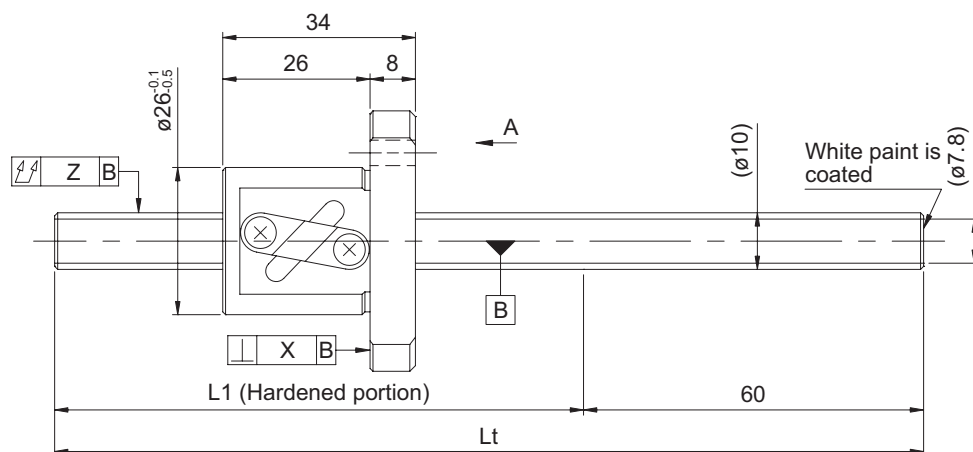
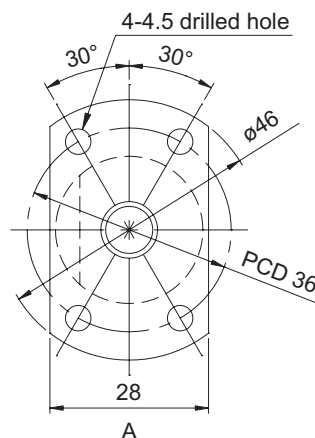
• Anticorrosive black coating (coating thickness: 1 to 2  $\mu\text{m}$ ) is available.

Lead accuracy	Accuracy of each part		Mass (kg)
Cumulative lead error	X	Z	
0.05/300	0.020	0.080	0.41
		0.120	0.53
0.21/300	---	0.150	0.41
		0.240	0.53



**Screw shaft  
diameter  $\varnothing 10$**

Shaft diameter (mm) - Lead (mm)	10 - 4	
Number of circuits / Thread direction	2.5 turns 1 circuit / Right-hand	
Ball diameter (mm)	2.3812	
Root diameter (mm)	7.8	
Series	GW	GY
Basic dynamic load rating C (N)	2300	
Basic static load rating C0 (N)	4800	
Accuracy grade / Axial clearance symbol	C7 / Y	C10 / Y
Axial clearance (mm)	0.030 or less	0.050 or less
Preload torque (N·cm)	----	
Recirculation system	Tube method	
Wiper	None	
Lubricant	Alvania Grease S2	
Phosphate coating	Nut alone	Screw shaft, nut



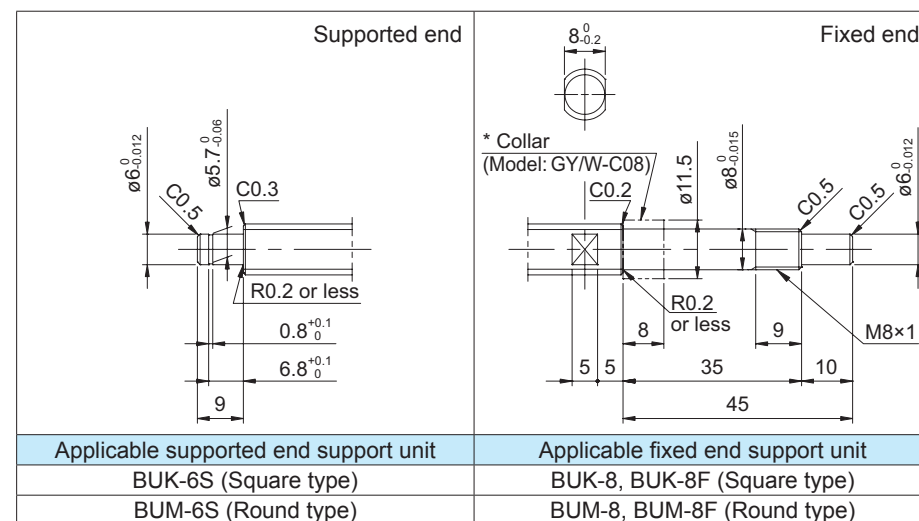
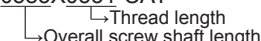
- At the time of delivery, grease is inserted inside of the nut, with rust-preventive oil also applied. Before and during use, apply lubricant where appropriate.

**Screw shaft  
diameter  $\varnothing 10$**

Standard rolled ball screws are available with KURODA's recommended shaft end finish types for each size.

**Model example:** Unfinished shaft ends (See left figure) → Finished shaft ends

GY1004DS-HANR-0600A → GY1004DS-HANR-0585X0531-CAY



- Anticorrosive black coating (coating thickness: 1 to 2  $\mu\text{m}$ ) is available.

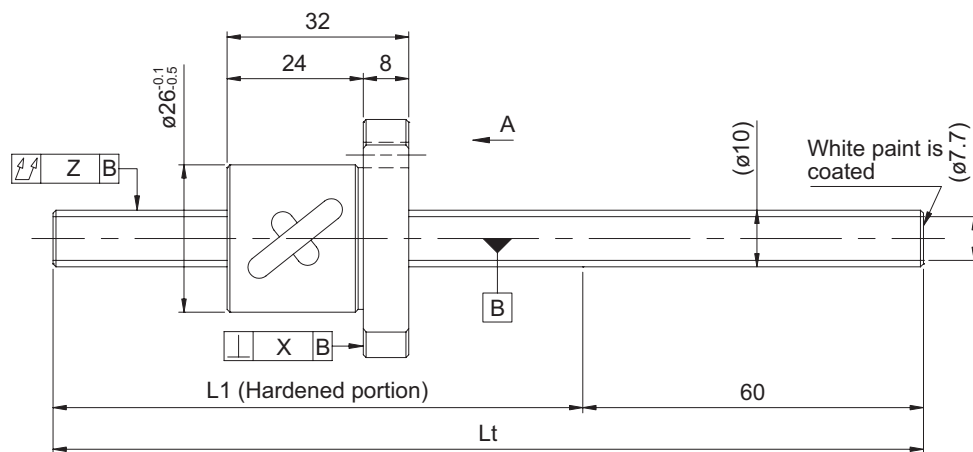
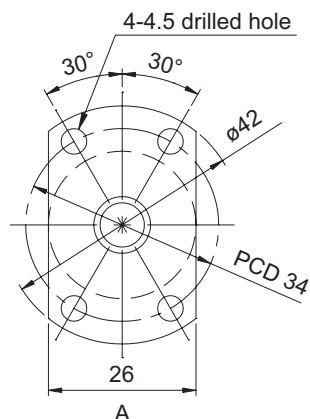
Lead accuracy	Accuracy of each part		Mass (kg)
Cumulative lead error	X	Z	
0.05/300	0.020	0.080	0.42
		0.120	0.54
0.21/300	---	0.150	0.42
		0.240	0.54



## GY series (Accuracy grade C10)

### • Ball screw specifications

Shaft diameter (mm) - Lead (mm)	10 - 5
Number of circuits / Thread direction	2.5 turns 1 circuit / Right-hand
Ball diameter (mm)	2.3812
Root diameter (mm)	7.7
Series	GY
Basic dynamic load rating C (N)	2300
Basic static load rating C0 (N)	4800
Accuracy grade / Axial clearance symbol	C10 / Y
Axial clearance (mm)	0.050 or less
Preload torque (N·cm)	----
Recirculation system	Tube method
Wiper	None
Lubricant	Alvania Grease S2
Phosphate coating	Screw shaft, nut



Model No. (Unfinished shaft ends)	L1	Lt	Maximum stroke (L1 - nut length)
GY1005DS-HUNR-0400A	340	400	308
GY1005DS-HUNR-0600A	540	600	508

• At the time of delivery, grease is inserted inside of the nut, with rust-preventive oil also applied.  
Before and during use, apply lubricant where appropriate.

## Screw shaft diameter ø10, Lead 5 (Round nut)

### • Shaft end finish type

Standard rolled ball screws are available with KUROMA's recommended shaft end finish types for each size.

Other than KUROMA's recommended shaft end finish types described below, additional machining including keyways, tapped holes, and D-cut processing are also available if requested. Please contact KUROMA with your orders. Model examples for finished shaft ends are described below.

**Model example:** Unfinished shaft ends (See left figure) → Finished shaft ends

GY1005DS-HUNR-0600A → GY1005DS-HUNR-0585X0531-CAY

→ Thread length  
→ Overall screw shaft length

Supported end	Fixed end
Applicable supported end support unit	Applicable fixed end support unit
BUK-6S (Square type)	BUK-8, BUK-8F (Square type)
BUM-6S (Round type)	BUM-8, BUM-8F (Round type)

### • Optional specifications

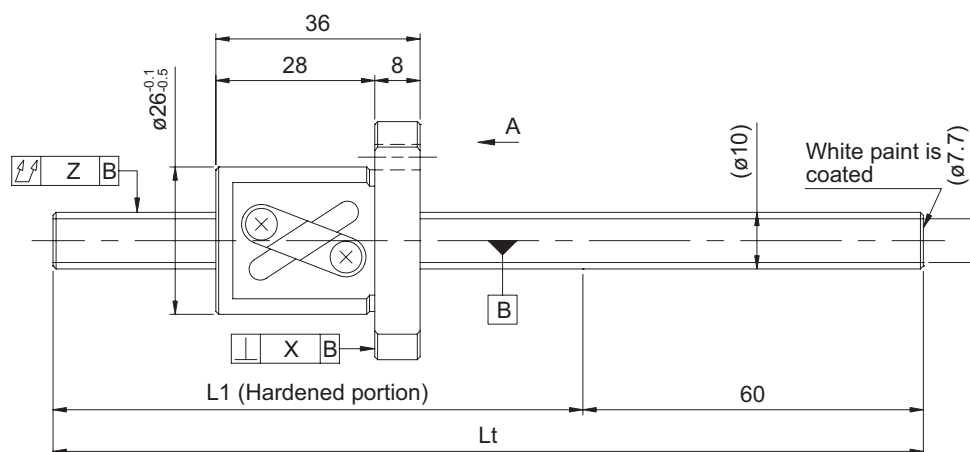
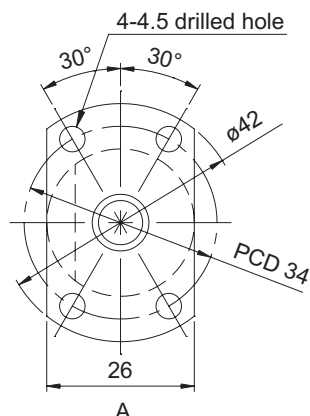
• Anticorrosive black coating (coating thickness: 1 to 2 μm) is available.

Lead accuracy	Accuracy of each part		Mass (kg)
Cumulative lead error	X	Z	
0.21/300	---	0.150	0.39
		0.240	0.52

## GY series (Accuracy grade C10)

### • Ball screw specifications

Shaft diameter (mm) - Lead (mm)	10 - 6
Number of circuits / Thread direction	2.5 turns 1 circuit / Right-hand
Ball diameter (mm)	2.3812
Root diameter (mm)	7.7
Series	GY
Basic dynamic load rating C (N)	2300
Basic static load rating C0 (N)	4800
Accuracy grade / Axial clearance symbol	C10 / Y
Axial clearance (mm)	0.050 or less
Preload torque (N·cm)	----
Recirculation system	Tube method
Wiper	None
Lubricant	Alvania Grease S2
Phosphate coating	Screw shaft, nut



Model No. (Unfinished shaft ends)	L1	Lt	Maximum stroke (L1 - nut length)
GY1006DS-HANR-0400A	340	400	304
GY1006DS-HANR-0600A	540	600	504

• At the time of delivery, grease is inserted inside of the nut, with rust-preventive oil also applied.  
Before and during use, apply lubricant where appropriate.

## Screw shaft diameter ø10, Lead 6 (Round nut)

### • Shaft end finish type

Standard rolled ball screws are available with KUROMA's recommended shaft end finish types for each size.

Other than KUROMA's recommended shaft end finish types described below, additional machining including keyways, tapped holes, and D-cut processing are also available if requested. Please contact KUROMA with your orders. Model examples for finished shaft ends are described below.

**Model example:** Unfinished shaft ends (See left figure) → Finished shaft ends

GY1006DS-HANR-0600A → GY1006DS-HANR-0585X0531-CAY

Thread length  
Overall screw shaft length

Supported end	Fixed end
Applicable supported end support unit	Applicable fixed end support unit
BUK-6S (Square type)	BUK-8, BUK-8F (Square type)
BUM-6S (Round type)	BUM-8, BUM-8F (Round type)

### • Optional specifications

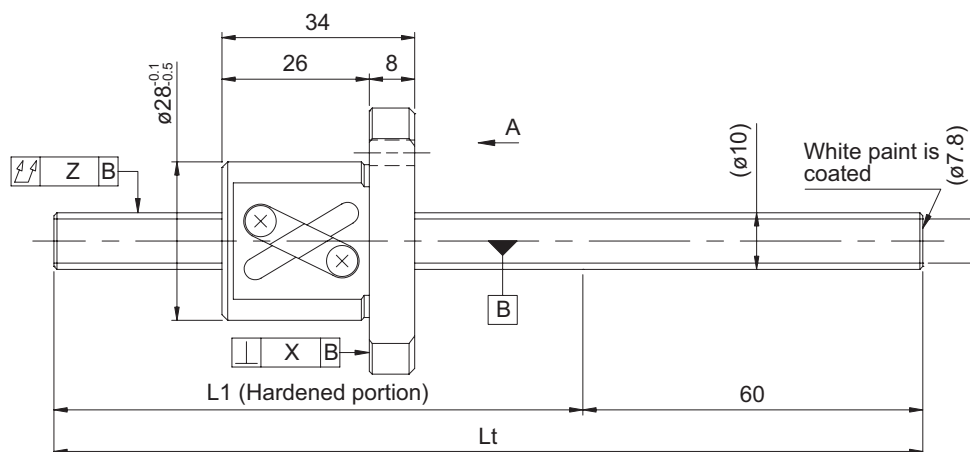
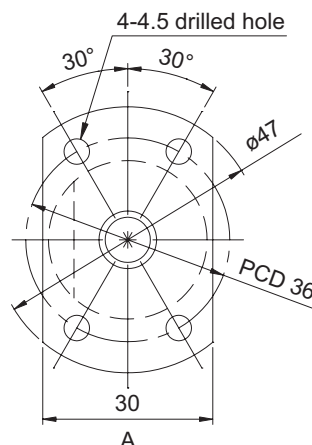
• Anticorrosive black coating (coating thickness: 1 to 2 μm) is available.

Lead accuracy	Accuracy of each part		Mass (kg)
Cumulative lead error	X	Z	
0.21/300	---	0.150	0.40
		0.240	0.52

## GW series (Accuracy grade C7) / GY series (Accuracy grade C10)

### • Ball screw specifications

Shaft diameter (mm) - Lead (mm)	10 - 10	
Number of circuits / Thread direction	1.5 turns 1 circuit / Right-hand	
Ball diameter (mm)	2.3812	
Root diameter (mm)	7.8	
Series	GW	GY
Basic dynamic load rating C (N)	1850	
Basic static load rating C0 (N)	3200	
Accuracy grade / Axial clearance symbol	C7 / Y	C10 / Y
Axial clearance (mm)	0.030 or less	0.050 or less
Preload torque (N·cm)	----	
Recirculation system	Tube method	
Wiper	None	
Lubricant	Alvania Grease S2	
Phosphate coating	Nut alone	Screw shaft, nut



Model No. (Unfinished shaft ends)	L1	Lt	Maximum stroke (L1 - nut length)
GW1010AS-HANR-0400A	340	400	306
GW1010AS-HANR-0600A	540	600	506
GY1010AS-HANR-0400A	340	400	306
GY1010AS-HANR-0600A	540	600	506

• At the time of delivery, grease is inserted inside of the nut, with rust-preventive oil also applied.  
Before and during use, apply lubricant where appropriate.

## Screw shaft diameter ø10, Lead 10 (Round nut)

### • Shaft end finish type

Standard rolled ball screws are available with KURODA's recommended shaft end finish types for each size.

Other than KURODA's recommended shaft end finish types described below, additional machining including keyways, tapped holes, and D-cut processing are also available if requested. Please contact KURODA with your orders. Model examples for finished shaft ends are described below.

**Model example:** Unfinished shaft ends (See left figure) → Finished shaft ends

GY1010AS-HANR-0600A → GY1010AS-HANR-0585X0531-CAY

Thread length  
Overall screw shaft length

Supported end	Fixed end
Applicable supported end support unit	Applicable fixed end support unit
BUK-6S (Square type)	BUK-8, BUK-8F (Square type)
BUM-6S (Round type)	BUM-8, BUM-8F (Round type)

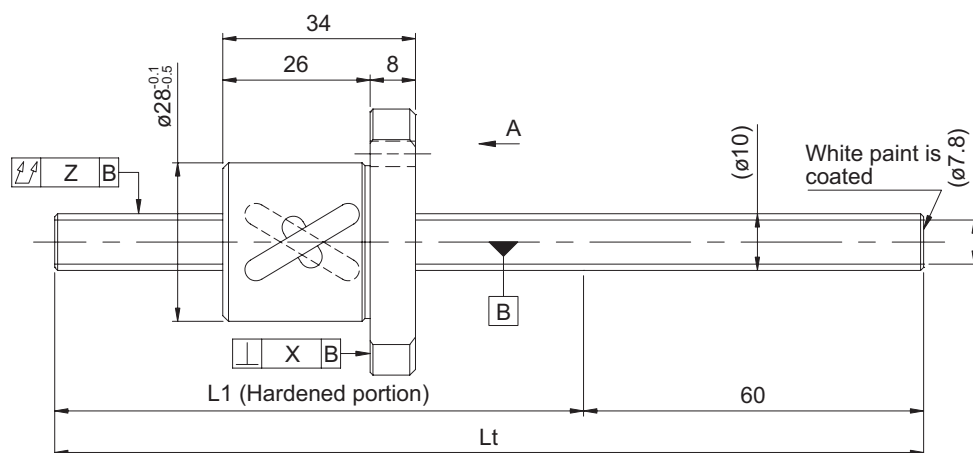
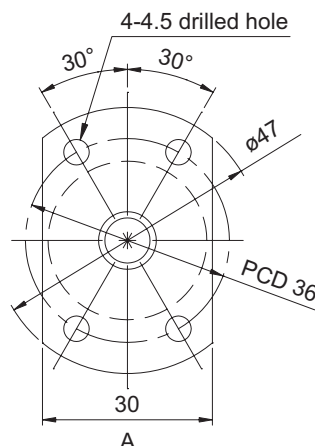
### • Optional specifications

• Anticorrosive black coating (coating thickness: 1 to 2 μm) is available.

Lead accuracy	Accuracy of each part		Mass (kg)
Cumulative lead error	X	Z	
0.05/300	0.020	0.080	0.43
		0.120	0.55
0.21/300	---	0.150	0.43
		0.240	0.55

**Screw shaft  
diameter  $\varnothing 10$**

Shaft diameter (mm) - Lead (mm)	10 - 10	
Number of circuits / Thread direction	1.5 turns 2 circuits / Right-hand	
Ball diameter (mm)	2.3812	
Root diameter (mm)	7.8	
Series	GW	GY
Basic dynamic load rating C (N)	3300	
Basic static load rating C0 (N)	6400	
Accuracy grade / Axial clearance symbol	C7 / Y	C10 / Y
Axial clearance (mm)	0.030 or less	0.050 or less
Preload torque (N·cm)	----	
Recirculation system	Tube method	
Wiper	None	
Lubricant	Alvania Grease S2	
Phosphate coating	Nut alone	Screw shaft, nut



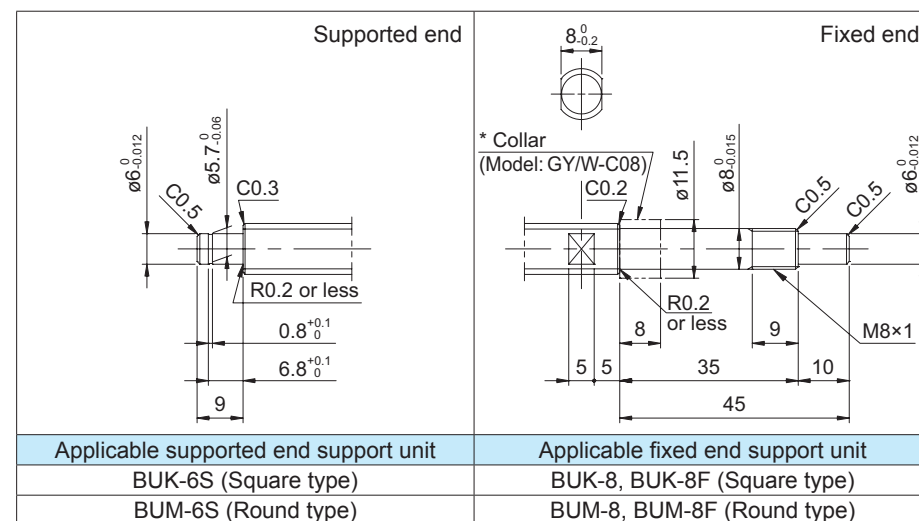
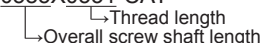
- At the time of delivery, grease is inserted inside of the nut, with rust-preventive oil also applied. Before and during use, apply lubricant where appropriate.

**Screw shaft  
diameter Ø10**

Standard rolled ball screws are available with KURODA's recommended shaft end finish types for each size.

**Model example:** Unfinished shaft ends (See left figure) → Finished shaft ends

GY1010BS-HUNR-0600A → GY1010BS-HUNR-0585X0531-CAY



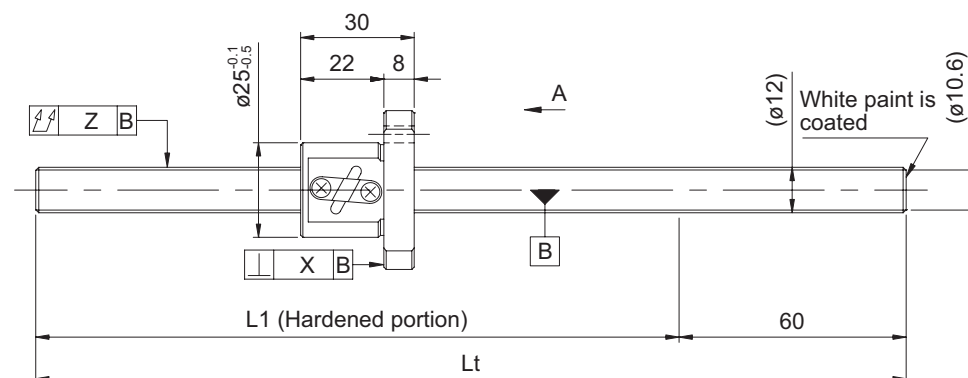
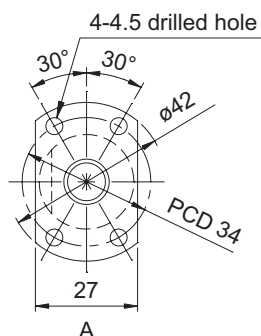
- Anticorrosive black coating (coating thickness: 1 to 2  $\mu\text{m}$ ) is available.

D-24

## GY series (Accuracy grade C10)

### • Ball screw specifications

Shaft diameter (mm) - Lead (mm)	12 - 2
Number of circuits / Thread direction	2.5 turns 1 circuit / Right-hand
Ball diameter (mm)	1.5875
Root diameter (mm)	10.6
Series	GY
Basic dynamic load rating C (N)	2000
Basic static load rating C0 (N)	3600
Accuracy grade / Axial clearance symbol	C10 / Y
Axial clearance (mm)	0.050 or less
Preload torque (N·cm)	----
Recirculation system	Tube method
Wiper	None
Lubricant	Alvania Grease S2
Phosphate coating	Screw shaft, nut



Model No. (Unfinished shaft ends)	L1	Lt	Maximum stroke (L1 - nut length)
GY1202DS-HANR-0400A	340	400	310
GY1202DS-HANR-0800A	740	800	710

• At the time of delivery, grease is inserted inside of the nut, with rust-preventive oil also applied. Before and during use, apply lubricant where appropriate.

## Screw shaft diameter 12, Lead 2 (Round nut)

### • Shaft end finish type

Standard rolled ball screws are available with KURODA's recommended shaft end finish types for each size.

Other than KURODA's recommended shaft end finish types described below, additional machining including keyways, tapped holes, and D-cut processing are also available if requested. Please contact KURODA with your orders. Model examples for finished shaft ends are described below.

**Model example:** Unfinished shaft ends (See left figure) → Finished shaft ends

GY1202DS-HANR-0800A → GY1202DS-HANR-0795X0730-CAY

Thread length  
Overall screw shaft length

Supported end	Fixed end
Applicable supported end support unit	Applicable fixed end support unit
BUK-8S (Square type)	BUK-10, BUK-10F (Square type)
BUM-8S (Round type)	BUM-10, BUM-10F (Round type)

### • Optional specifications

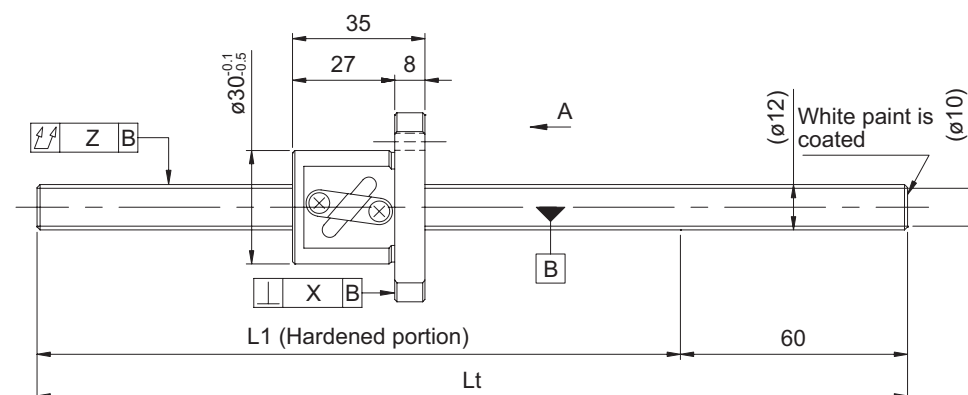
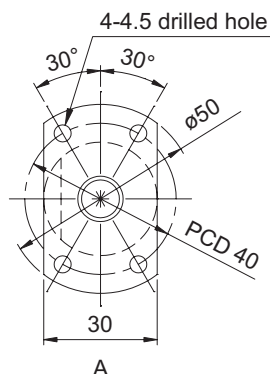
• Anticorrosive black coating (coating thickness: 1 to 2 μm) is available.

Lead accuracy	Accuracy of each part		Mass (kg)
Cumulative lead error	X	Z	
0.21/300	---	0.150	0.47
		0.320	0.83

## GW series (Accuracy grade C7) / GY series (Accuracy grade C10)

### • Ball screw specifications

Shaft diameter (mm) - Lead (mm)	12 - 4	
Number of circuits / Thread direction	2.5 turns 1 circuit / Right-hand	
Ball diameter (mm)	2.3812	
Root diameter (mm)	10	
Series	GW	GY
Basic dynamic load rating C (N)	2600	
Basic static load rating C0 (N)	5800	
Accuracy grade / Axial clearance symbol	C7 / Y	C10 / Y
Axial clearance (mm)	0.030 or less	0.050 or less
Preload torque (N·cm)	----	
Recirculation system	Tube method	
Wiper	None	
Lubricant	Alvania Grease S2	
Phosphate coating	Nut alone	Screw shaft, nut



Model No. (Unfinished shaft ends)	L1	Lt	Maximum stroke (L1 - nut length)
GW1204DS-HANR-0400A	340	400	305
GW1204DS-HANR-0800A	740	800	705
GY1204DS-HANR-0400A	340	400	305
GY1204DS-HANR-0800A	740	800	705

• At the time of delivery, grease is inserted inside of the nut, with rust-preventive oil also applied.  
Before and during use, apply lubricant where appropriate.

## Screw shaft diameter ø12, Lead 4 (Round nut)

### • Shaft end finish type

Standard rolled ball screws are available with KURODA's recommended shaft end finish types for each size.

Other than KURODA's recommended shaft end finish types described below, additional machining including keyways, tapped holes, and D-cut processing are also available if requested. Please contact KURODA with your orders. Model examples for finished shaft ends are described below.

**Model example:** Unfinished shaft ends (See left figure) → Finished shaft ends

GY1204DS-HANR-0800A → GY1204DS-HANR-0795X0730-CAY

Thread length  
Overall screw shaft length

Supported end	Fixed end
Applicable supported end support unit	Applicable fixed end support unit
BUK-8S (Square type)	BUK-10, BUK-10F (Square type)
BUM-8S (Round type)	BUM-10, BUM-10F (Round type)

### • Optional specifications

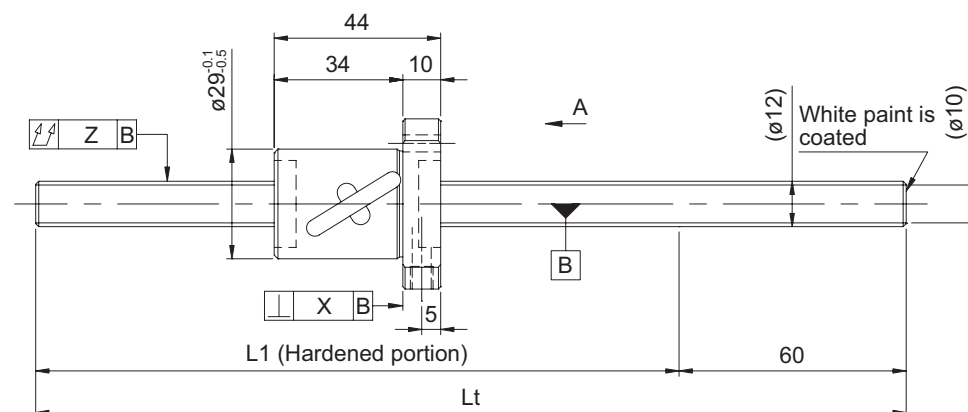
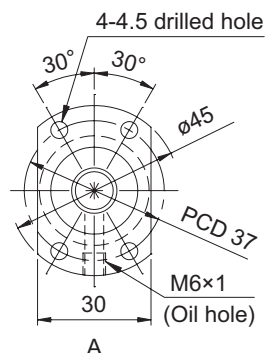
• Anticorrosive black coating (coating thickness: 1 to 2 μm) is available.

Lead accuracy	Accuracy of each part		Mass (kg)
Cumulative lead error	X	Z	
0.05/300	0.020	0.080	0.57
		0.200	0.92
0.21/300	---	0.150	0.57
		0.320	0.92

## GY series (Accuracy grade C10)

### • Ball screw specifications

Shaft diameter (mm) - Lead (mm)	12 - 8
Number of circuits / Thread direction	2.5 turns 1 circuit / Right-hand
Ball diameter (mm)	2.778
Root diameter (mm)	10
Series	GY
Basic dynamic load rating C (N)	3800
Basic static load rating C0 (N)	6700
Accuracy grade / Axial clearance symbol	C10 / Y
Axial clearance (mm)	0.050 or less
Preload torque (N·cm)	----
Recirculation system	Tube method
Wiper	None
Lubricant	Alvania Grease S2
Phosphate coating	Screw shaft, nut



Model No. (Unfinished shaft ends)	L1	Lt	Maximum stroke (L1 - nut length)
GY1208DS-HULR-0400A	340	400	296
GY1208DS-HULR-0800A	740	800	696

• At the time of delivery, grease is inserted inside of the nut, with rust-preventive oil also applied.  
Before and during use, apply lubricant where appropriate.

## Screw shaft diameter $\phi 12$ , Lead 8 (Round nut)

### • Shaft end finish type

Standard rolled ball screws are available with KUROMA's recommended shaft end finish types for each size.

Other than KUROMA's recommended shaft end finish types described below, additional machining including keyways, tapped holes, and D-cut processing are also available if requested. Please contact KUROMA with your orders. Model examples for finished shaft ends are described below.

**Model example:** Unfinished shaft ends (See left figure) → Finished shaft ends

GY1208DS-HANR-0800A → GY1208DS-HANR-0795X0730-CAY

Thread length  
Overall screw shaft length

Supported end	Fixed end
Applicable supported end support unit	Applicable fixed end support unit
BUK-8S (Square type)	BUK-10, BUK-10F (Square type)
BUM-8S (Round type)	BUM-10, BUM-10F (Round type)

### • Optional specifications

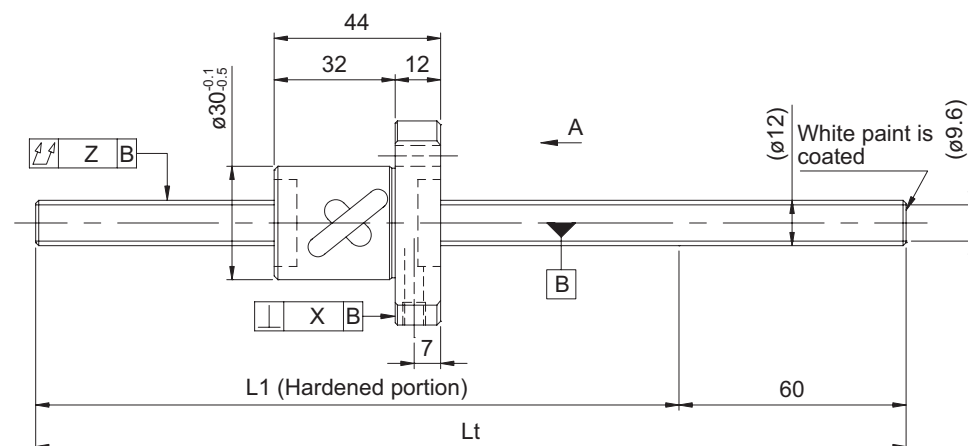
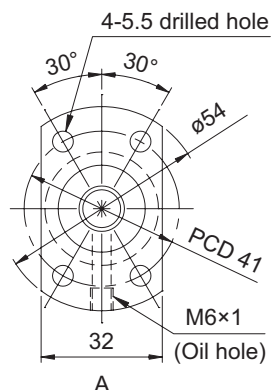
• Anticorrosive black coating (coating thickness: 1 to 2  $\mu$ m) is available.

Lead accuracy	Accuracy of each part		Mass (kg)
Cumulative lead error	X	Z	
0.21/300	---	0.150	0.58
		0.320	0.94



**Screw shaft  
diameter  $\varnothing 12$**

Shaft diameter (mm) - Lead (mm)	12 - 10	
Number of circuits / Thread direction	1.5 turns 1 circuit / Right-hand	
Ball diameter (mm)	3.175	
Root diameter (mm)	9.6	
Series	GW	GY
Basic dynamic load rating C (N)	2850	
Basic static load rating C0 (N)	4950	
Accuracy grade / Axial clearance symbol	C7 / Y	C10 / Y
Axial clearance (mm)	0.030 or less	0.050 or less
Preload torque (N·cm)	----	
Recirculation system	Tube method	
Wiper	None	
Lubricant	Alvania Grease S2	
Phosphate coating	Nut alone	Screw shaft, nut



Model No. (Unfinished shaft ends)	L1	Lt	Maximum stroke (L1 - nut length)
GW1210AS-HULR-0400A	340	400	296
GW1210AS-HULR-0800A	740	800	696
GY1210AS-HULR-0400A	340	400	296
GY1210AS-HULR-0800A	740	800	696

**KURODA**  
**JENATEC**

Screw shaft diameter  $\varnothing 12$

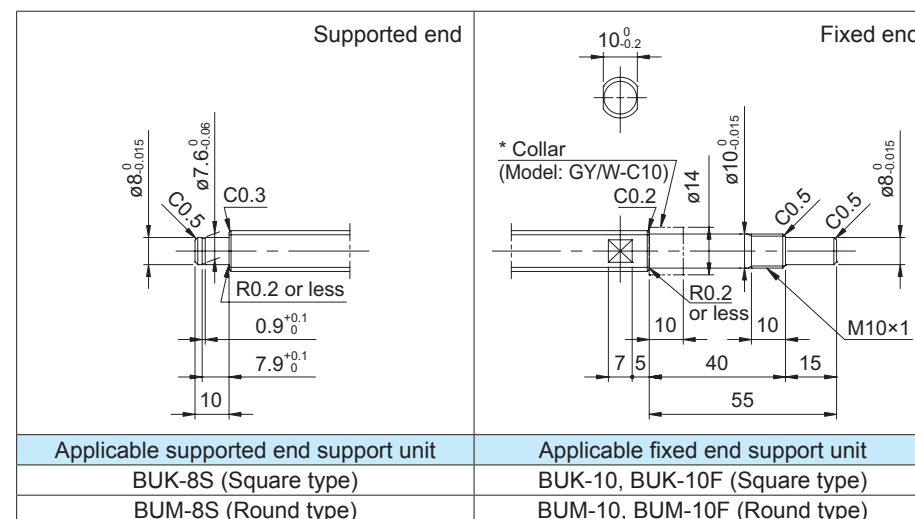
Standard rolled ball screws are available with KURODA's recommended shaft end finish types for each size.

Other than KURODA's recommended shaft end finish types described below, additional machining including keyways, tapped holes, and D-cut processing are also available if requested. Please contact KURODA with your orders. Model examples for finished shaft ends are described below.

**Model example:** Unfinished shaft ends (See left figure) → Finished shaft ends

GY1210AS-HULR-0800A → GY1210AS-HULR-0795X0730-CAY

Thread length  
 Overall screw shaft length



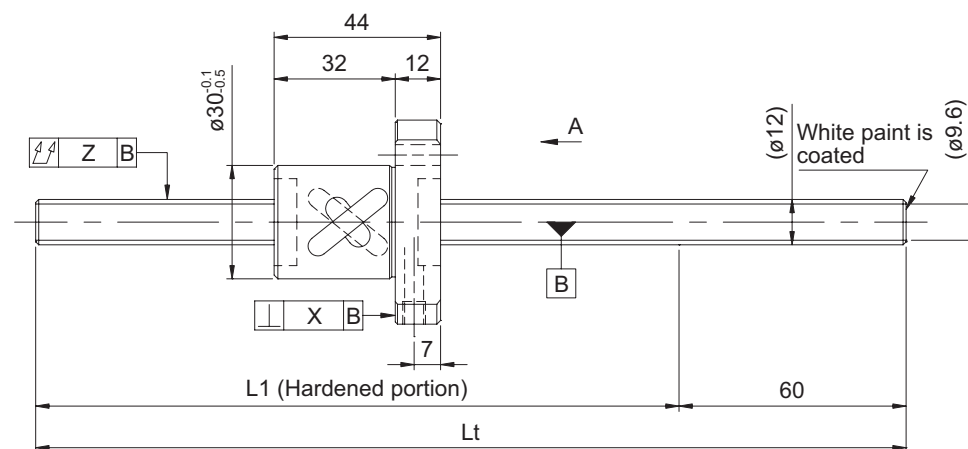
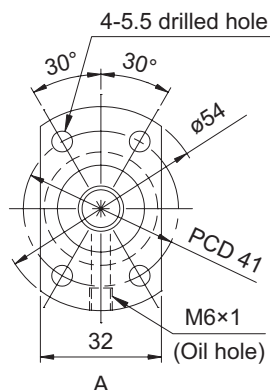
- Anticorrosive black coating (coating thickness: 1 to 2  $\mu\text{m}$ ) is available.

Lead accuracy	Accuracy of each part		Mass (kg)
Cumulative lead error	X	Z	
0.05/300	0.020	0.080	0.62
		0.200	0.98
0.21/300	---	0.150	0.62
		0.320	0.98

## GW series (Accuracy grade C7) / GY series (Accuracy grade C10)

### • Ball screw specifications

Shaft diameter (mm) - Lead (mm)	12 - 10	
Number of circuits / Thread direction	1.5 turns 2 circuits / Right-hand	
Ball diameter (mm)	3.175	
Root diameter (mm)	9.6	
Series	GW	GY
Basic dynamic load rating C (N)	5100	
Basic static load rating C0 (N)	9900	
Accuracy grade / Axial clearance symbol	C7 / Y	C10 / Y
Axial clearance (mm)	0.030 or less	0.050 or less
Preload torque (N·cm)	----	
Recirculation system	Tube method	
Wiper	None	
Lubricant	Alvania Grease S2	
Phosphate coating	Nut alone	Screw shaft, nut



Model No. (Unfinished shaft ends)	L1	Lt	Maximum stroke (L1 - nut length)
GW1210BS-HULR-0400A	340	400	296
GW1210BS-HULR-0800A	740	800	696
GY1210BS-HULR-0400A	340	400	296
GY1210BS-HULR-0800A	740	800	696

• At the time of delivery, grease is inserted inside of the nut, with rust-preventive oil also applied.  
Before and during use, apply lubricant where appropriate.

## Screw shaft diameter ø12, Lead 10 (Round nut)

### • Shaft end finish type

Standard rolled ball screws are available with KURODA's recommended shaft end finish types for each size.

Other than KURODA's recommended shaft end finish types described below, additional machining including keyways, tapped holes, and D-cut processing are also available if requested. Please contact KURODA with your orders. Model examples for finished shaft ends are described below.

**Model example:** Unfinished shaft ends (See left figure) → Finished shaft ends

GY1210BS-HULR-0800A → GY1210BS-HULR-0795X0730-CAY

Thread length  
Overall screw shaft length

Supported end	Fixed end
Applicable supported end support unit	Applicable fixed end support unit
BUK-8S (Square type)	BUK-10, BUK-10F (Square type)
BUM-8S (Round type)	BUM-10, BUM-10F (Round type)

### • Optional specifications

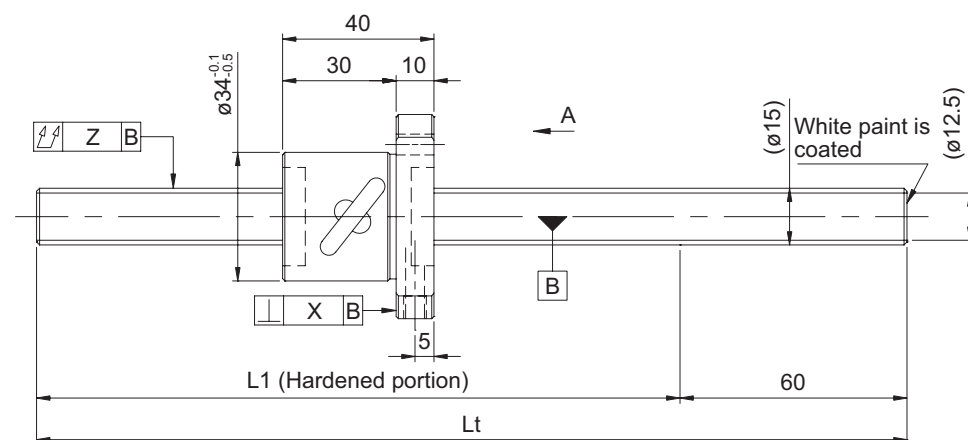
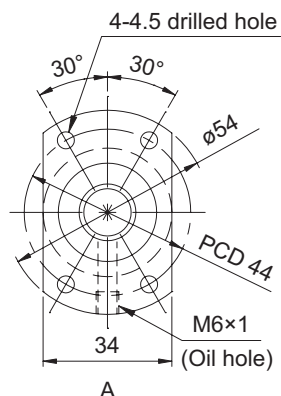
• Anticorrosive black coating (coating thickness: 1 to 2 μm) is available.

Lead accuracy	Accuracy of each part		Mass (kg)
Cumulative lead error	X	Z	
0.05/300	0.020	0.080	0.62
		0.200	0.98
0.21/300	---	0.150	0.62
		0.320	0.98

## GW series (Accuracy grade C7) / GY series (Accuracy grade C10)

### • Ball screw specifications

Shaft diameter (mm) - Lead (mm)	15 - 5	
Number of circuits / Thread direction	2.5 turns 1 circuit / Right-hand	
Ball diameter (mm)	3.175	
Root diameter (mm)	12.5	
Series	GW	GY
Basic dynamic load rating C (N)	5100	
Basic static load rating C0 (N)	10500	
Accuracy grade / Axial clearance symbol	C7 / Y	C10 / Y
Axial clearance (mm)	0.030 or less	0.100 or less
Preload torque (N·cm)	----	
Recirculation system	Tube method	
Wiper	Lip seal	
Lubricant	Alvania Grease S2	
Phosphate coating	Nut alone	Screw shaft, nut



Model No. (Unfinished shaft ends)	L1	Lt	Maximum stroke (L1 - nut length)
GW1505DS-HULR-0600A	540	600	500
GW1505DS-HULR-1200A	1140	1200	1100
GY1505DS-HULR-0600A	540	600	500
GY1505DS-HULR-1200A	1140	1200	1100

• At the time of delivery, grease is inserted inside of the nut, with rust-preventive oil also applied.  
Before and during use, apply lubricant where appropriate.

## Screw shaft diameter ø15, Lead 5 (Round nut)

### • Shaft end finish type

Standard rolled ball screws are available with KURODA's recommended shaft end finish types for each size.

Other than KURODA's recommended shaft end finish types described below, additional machining including keyways, tapped holes, and D-cut processing are also available if requested. Please contact KURODA with your orders. Model examples for finished shaft ends are described below.

**Model example:** Unfinished shaft ends (See left figure) → Finished shaft ends

GY1505DS-HULR-1200A → GY1505DS-HULR-1195X1128-CAY  
 ↳ Thread length  
 ↳ Overall screw shaft length

Supported end	Fixed end
Applicable supported end support unit	Applicable fixed end support unit
BUK-10S (Square type)	BUK-12, BUK-12F (Square type)
BUM-10S (Round type)	BUM-12, BUM-12F (Round type)

### • Optional specifications

• Ball screw lubricating unit LUBSEAL can be equipped.

**Model example:** GY1505DS-HUSR-1195X1128-CAY  
 ↳ Wiper material S: LUBSEAL

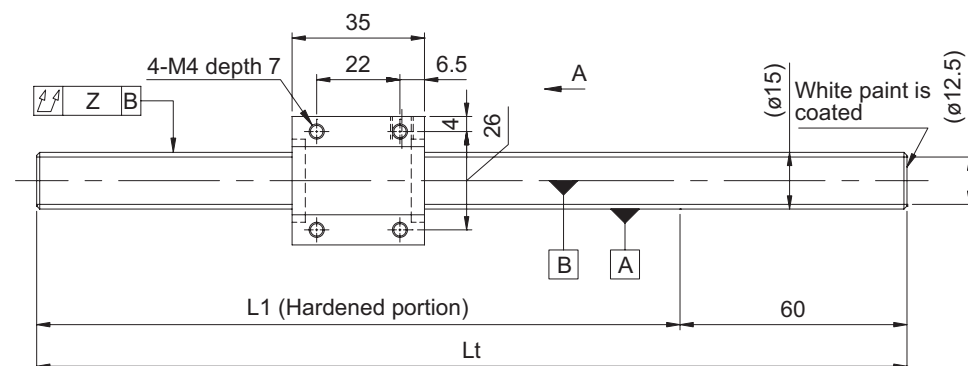
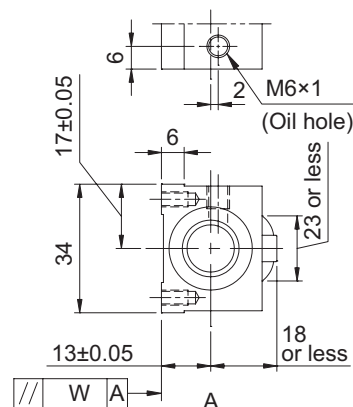
• Anticorrosive black coating (coating thickness: 1 to 2 µm) is available.

Lead accuracy	Accuracy of each part		Mass (kg)
Cumulative lead error	X	Z	
0.05/300	0.025	0.070	1.08
		0.170	1.91
0.21/300	---	0.140	1.08
		0.400	1.91

## GW series (Accuracy grade C7) / GY series (Accuracy grade C10)

### • Ball screw specifications

Shaft diameter (mm) - Lead (mm)	15 - 5	
Number of circuits / Thread direction	2.5 turns 1 circuit / Right-hand	
Ball diameter (mm)	3.175	
Root diameter (mm)	12.5	
Series	GW	GY
Basic dynamic load rating C (N)	5100	
Basic static load rating C0 (N)	10500	
Accuracy grade / Axial clearance symbol	C7 / Y	C10 / Y
Axial clearance (mm)	0.030 or less	0.100 or less
Preload torque (N·cm)	----	
Recirculation system	Tube method	
Wiper	Lip seal	
Lubricant	Alvania Grease S2	
Phosphate coating	Nut alone	Screw shaft, nut



Model No. (Unfinished shaft ends)	L1	Lt	Maximum stroke (L1 - nut length)
GW1505DS-NKLR-0600A	540	600	505
GW1505DS-NKLR-1200A	1140	1200	1105
GY1505DS-NKLR-0600A	540	600	505
GY1505DS-NKLR-1200A	1140	1200	1105

• At the time of delivery, grease is inserted inside of the nut, with rust-preventive oil also applied.  
Before and during use, apply lubricant where appropriate.

## Screw shaft diameter ø15, Lead 5 (Square nut)

### • Shaft end finish type

Standard rolled ball screws are available with KURODA's recommended shaft end finish types for each size.

Other than KURODA's recommended shaft end finish types described below, additional machining including keyways, tapped holes, and D-cut processing are also available if requested. Please contact KURODA with your orders. Model examples for finished shaft ends are described below.

**Model example:** Unfinished shaft ends (See left figure) → Finished shaft ends

GY1505DS-NKLR-1200A → GY1505DS-NKLR-1195X1128-CAY

Thread length  
Overall screw shaft length

Supported end	Fixed end
Applicable supported end support unit	Applicable fixed end support unit
BUK-10S (Square type)	BUK-12, BUK-12F (Square type)
BUM-10S (Round type)	BUM-12, BUM-12F (Round type)

### • Optional specifications

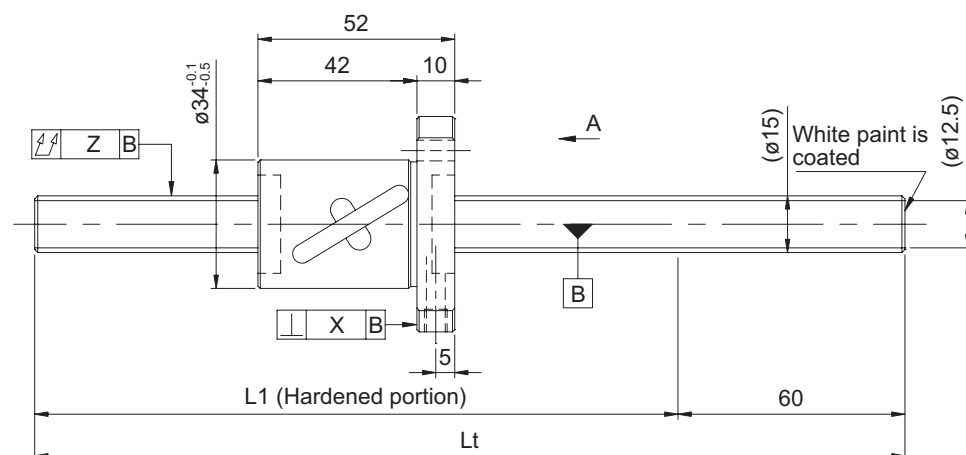
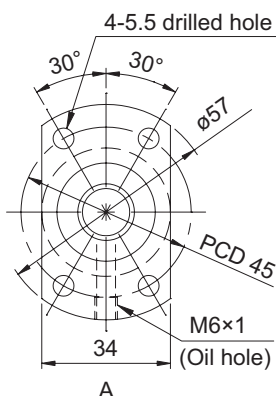
• Anticorrosive black coating (coating thickness: 1 to 2 µm) is available.

Lead accuracy	Accuracy of each part		Mass (kg)
Cumulative lead error	W	Z	
0.05/300	0.017	0.070	1.05
		0.170	1.88
0.21/300	---	0.140	1.05
		0.400	1.88

## GW series (Accuracy grade C7) / GY series (Accuracy grade C10)

### • Ball screw specifications

Shaft diameter (mm) - Lead (mm)	15 - 10	
Number of circuits / Thread direction	2.5 turns 1 circuit / Right-hand	
Ball diameter (mm)	3.175	
Root diameter (mm)	12.5	
Series	GW	GY
Basic dynamic load rating C (N)	5100	
Basic static load rating C0 (N)	10500	
Accuracy grade / Axial clearance symbol	C7 / Y	C10 / Y
Axial clearance (mm)	0.030 or less	0.100 or less
Preload torque (N·cm)	----	
Recirculation system	Tube method	
Wiper	Lip seal	
Lubricant	Alvania Grease S2	
Phosphate coating	Nut alone	Screw shaft, nut



Model No. (Unfinished shaft ends)	L1	Lt	Maximum stroke (L1 - nut length)
GW1510DS-HULR-0600A	540	600	488
GW1510DS-HULR-1200A	1140	1200	1088
GY1510DS-HULR-0600A	540	600	488
GY1510DS-HULR-1200A	1140	1200	1088

• At the time of delivery, grease is inserted inside of the nut, with rust-preventive oil also applied.  
Before and during use, apply lubricant where appropriate.

## Screw shaft diameter ø15, Lead 10 (Round nut)

### • Shaft end finish type

Standard rolled ball screws are available with KURODA's recommended shaft end finish types for each size.

Other than KURODA's recommended shaft end finish types described below, additional machining including keyways, tapped holes, and D-cut processing are also available if requested. Please contact KURODA with your orders. Model examples for finished shaft ends are described below.

**Model example:** Unfinished shaft ends (See left figure) → Finished shaft ends

GY1510DS-HULR-1200A → GY1510DS-HULR-1195X1128-CAY

↳ Thread length  
↳ Overall screw shaft length

Supported end	Fixed end
Applicable supported end support unit	Applicable fixed end support unit
BUK-10S (Square type)	BUK-12, BUK-12F (Square type)
BUM-10S (Round type)	BUM-12, BUM-12F (Round type)

### • Optional specifications

• Ball screw lubricating unit LUBSEAL can be equipped.

**Model example:** GY1510DS-HULR-1195X1128-CAY

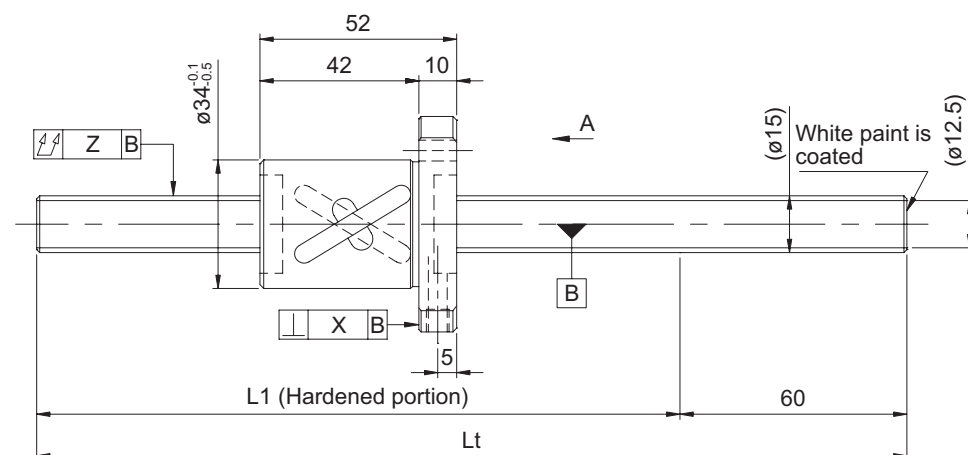
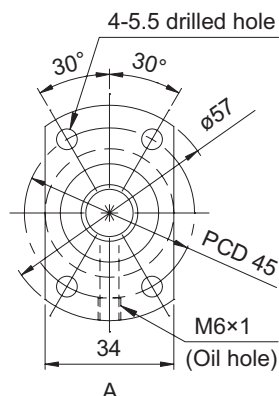
↳ Wiper material S: LUBSEAL

• Anticorrosive black coating (coating thickness: 1 to 2 μm) is available.

Lead accuracy	Accuracy of each part		Mass (kg)
Cumulative lead error	X	Z	
0.05/300	0.025	0.070	1.18
		0.170	2.01
0.21/300	---	0.140	1.18
		0.400	2.01

**Screw shaft  
diameter  $\varnothing 15$**

Shaft diameter (mm) - Lead (mm)	15 - 10	
Number of circuits / Thread direction	2.5 turns 2 circuits / Right-hand	
Ball diameter (mm)	3.175	
Root diameter (mm)	12.5	
Series	GW	GY
Basic dynamic load rating C (N)	9200	
Basic static load rating C0 (N)	21000	
Accuracy grade / Axial clearance symbol	C7 / Y	C10 / Y
Axial clearance (mm)	0.030 or less	0.100 or less
Preload torque (N·cm)	----	
Recirculation system	Tube method	
Wiper	Lip seal	
Lubricant	Alvania Grease S2	
Phosphate coating	Nut alone	Screw shaft, nut



- At the time of delivery, grease is inserted inside of the nut, with rust-preventive oil also applied. Before and during use, apply lubricant where appropriate.

**Screw shaft  
diameter  $\varnothing 15$**

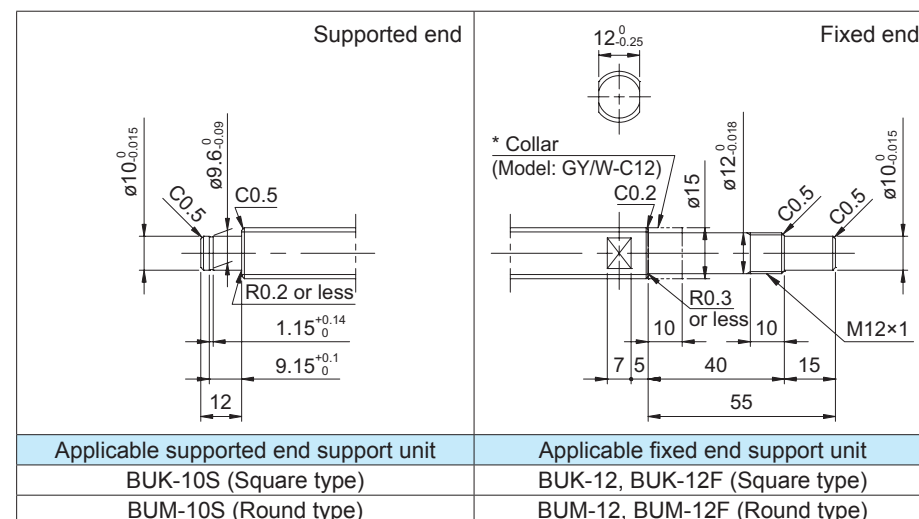
Standard rolled ball screws are available with KURODA's recommended shaft end finish types for each size.

Other than KURODA's recommended shaft end finish types described below, additional machining including keyways, tapped holes, and D-cut processing are also available if requested. Please contact KURODA with your orders. Model examples for finished shaft ends are described below.

**Model example:** Unfinished shaft ends (See left figure) → Finished shaft ends

GY1510ES-HULR-1200A → GY1510ES-HULR-1195X1128-CAY

Thread length  
 Overall screw shaft length



- Ball screw lubricating unit LUBSEAL can be equipped.

**Model example:** GY1510ES-HUSR-1195X1128-CAY

↳ Wiper material S: LUBSEAL

- Anticorrosive black coating (coating thickness: 1 to 2  $\mu\text{m}$ ) is available.

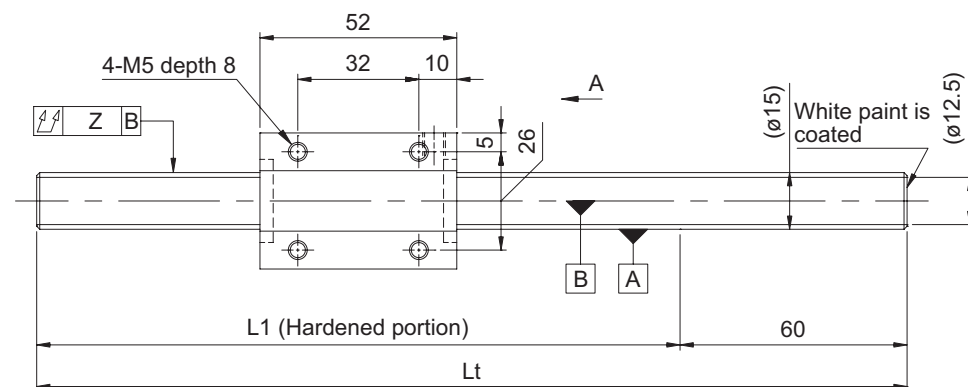
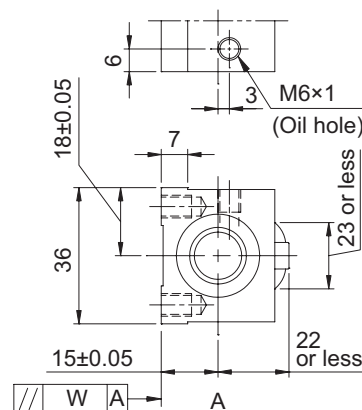
D-42



## GW series (Accuracy grade C7) / GY series (Accuracy grade C10)

### • Ball screw specifications

Shaft diameter (mm) - Lead (mm)	15 - 10	
Number of circuits / Thread direction	2.5 turns 1 circuit / Right-hand	
Ball diameter (mm)	3.175	
Root diameter (mm)	12.5	
Series	GW	GY
Basic dynamic load rating C (N)	5100	
Basic static load rating C0 (N)	10500	
Accuracy grade / Axial clearance symbol	C7 / Y	C10 / Y
Axial clearance (mm)	0.030 or less	0.100 or less
Preload torque (N·cm)	----	
Recirculation system	Tube method	
Wiper	Lip seal	
Lubricant	Alvania Grease S2	
Phosphate coating	Nut alone	Screw shaft, nut



Model No. (Unfinished shaft ends)	L1	Lt	Maximum stroke (L1 - nut length)
GW1510DS-NKLR-0600A	540	600	488
GW1510DS-NKLR-1200A	1140	1200	1088
GY1510DS-NKLR-0600A	540	600	488
GY1510DS-NKLR-1200A	1140	1200	1088

• At the time of delivery, grease is inserted inside of the nut, with rust-preventive oil also applied.  
Before and during use, apply lubricant where appropriate.

## Screw shaft diameter ø15, Lead 10 (Square nut)

### • Shaft end finish type

Standard rolled ball screws are available with KURODA's recommended shaft end finish types for each size.

Other than KURODA's recommended shaft end finish types described below, additional machining including keyways, tapped holes, and D-cut processing are also available if requested. Please contact KURODA with your orders. Model examples for finished shaft ends are described below.

**Model example:** Unfinished shaft ends (See left figure) → Finished shaft ends

GY1510DS-NKLR-1200A → GY1510DS-NKLR-1195X1128-CAY  
 ↳ Thread length  
 ↳ Overall screw shaft length

Supported end	Fixed end
Applicable supported end support unit	Applicable fixed end support unit
BUK-10S (Square type)	BUK-12, BUK-12F (Square type)
BUM-10S (Round type)	BUM-12, BUM-12F (Round type)

### • Optional specifications

• Anticorrosive black coating (coating thickness: 1 to 2 µm) is available.

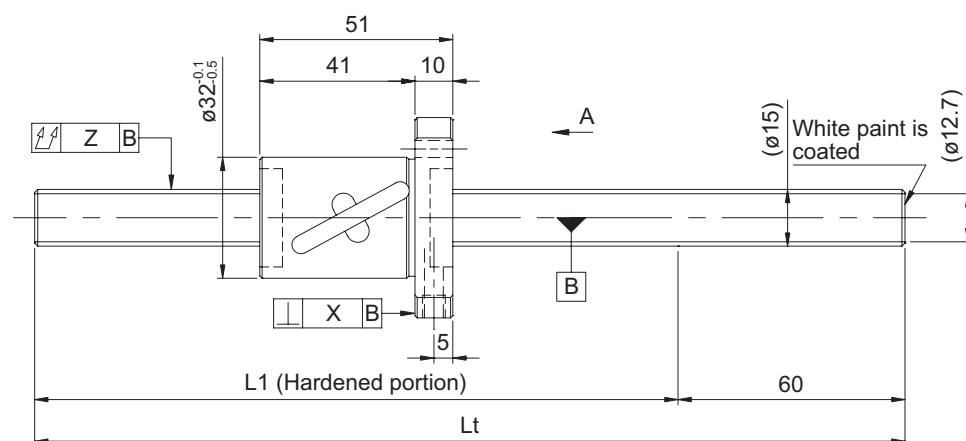
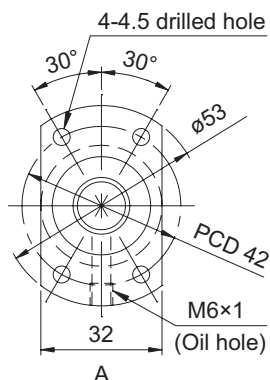
Lead accuracy	Accuracy of each part		Mass (kg)
Cumulative lead error	W	Z	
0.05/300	0.017	0.070	1.24
		0.170	2.07
0.21/300	---	0.140	1.24
		0.400	2.07



## GW series (Accuracy grade C7) / GY series (Accuracy grade C10)

### • Ball screw specifications

Shaft diameter (mm) - Lead (mm)	15 - 16	
Number of circuits / Thread direction	1.5 turns 2 circuits / Right-hand	
Ball diameter (mm)	2.778	
Root diameter (mm)	12.7	
Series	GW	GY
Basic dynamic load rating C (N)	4300	
Basic static load rating C0 (N)	10200	
Accuracy grade / Axial clearance symbol	C7 / Y	C10 / Y
Axial clearance (mm)	0.030 or less	0.100 or less
Preload torque (N·cm)	----	
Recirculation system	Tube method	
Wiper	Lip seal	
Lubricant	Alvania Grease S2	
Phosphate coating	Nut alone	Screw shaft, nut



Model No. (Unfinished shaft ends)	L1	Lt	Maximum stroke (L1 - nut length)
GW1516BS-HULR-0600A	540	600	489
GW1516BS-HULR-1200A	1140	1200	1089
GY1516BS-HULR-0600A	540	600	489
GY1516BS-HULR-1200A	1140	1200	1089

• At the time of delivery, grease is inserted inside of the nut, with rust-preventive oil also applied. Before and during use, apply lubricant where appropriate.

## Screw shaft diameter ø15, Lead 16 (Round nut)

### • Shaft end finish type

Standard rolled ball screws are available with KURODA's recommended shaft end finish types for each size.

Other than KURODA's recommended shaft end finish types described below, additional machining including keyways, tapped holes, and D-cut processing are also available if requested. Please contact KURODA with your orders. Model examples for finished shaft ends are described below.

**Model example:** Unfinished shaft ends (See left figure) → Finished shaft ends

GY1516BS-HULR-1200A → GY1516BS-HULR-1195X1128-CAY  
 ↳ Thread length  
 ↳ Overall screw shaft length

Supported end	Fixed end
Applicable supported end support unit	Applicable fixed end support unit
BUK-10S (Square type)	BUK-12, BUK-12F (Square type)
BUM-10S (Round type)	BUM-12, BUM-12F (Round type)

### • Optional specifications

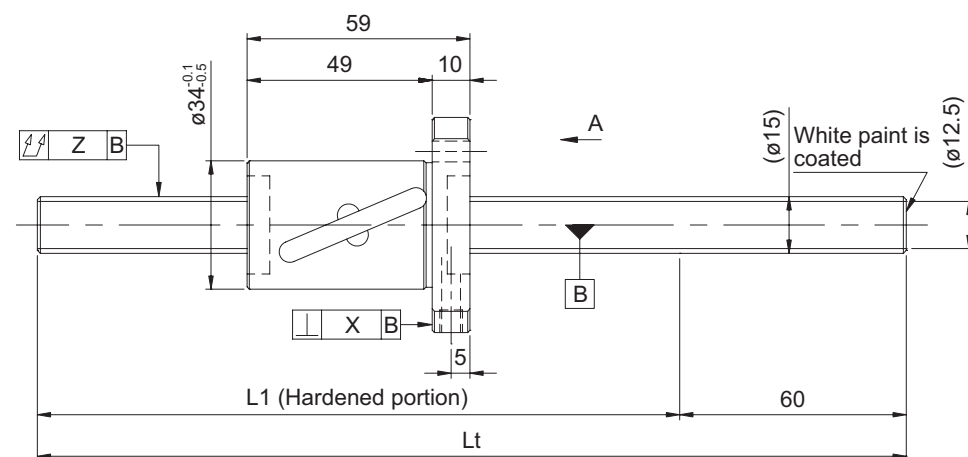
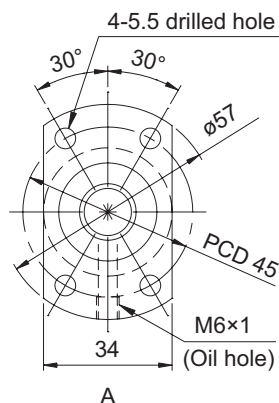
• Anticorrosive black coating (coating thickness: 1 to 2 μm) is available.

Lead accuracy	Accuracy of each part		Mass (kg)
Cumulative lead error	X	Z	
0.05/300	0.020	0.070	1.15
		0.170	1.98
0.21/300	---	0.140	1.15
		0.400	1.98

## GW series (Accuracy grade C7) / GY series (Accuracy grade C10)

### • Ball screw specifications

Shaft diameter (mm) - Lead (mm)	15 - 20	
Number of circuits / Thread direction	1.5 turns 2 circuits / Right-hand	
Ball diameter (mm)	3.175	
Root diameter (mm)	12.5	
Series	GW	GY
Basic dynamic load rating C (N)	5800	
Basic static load rating C0 (N)	13300	
Accuracy grade / Axial clearance symbol	C7 / Y	C10 / Y
Axial clearance (mm)	0.030 or less	0.100 or less
Preload torque (N·cm)	----	
Recirculation system	Tube method	
Wiper	Lip seal	
Lubricant	Alvania Grease S2	
Phosphate coating	Nut alone	Screw shaft, nut



Model No. (Unfinished shaft ends)	L1	Lt	Maximum stroke (L1 - nut length)
GW1520BS-HULR-0600A	540	600	481
GW1520BS-HULR-1200A	1140	1200	1081
GY1520BS-HULR-0600A	540	600	481
GY1520BS-HULR-1200A	1140	1200	1081

• At the time of delivery, grease is inserted inside of the nut, with rust-preventive oil also applied.  
Before and during use, apply lubricant where appropriate.

## Screw shaft diameter ø15, Lead 20 (Round nut)

### • Shaft end finish type

Standard rolled ball screws are available with KURODA's recommended shaft end finish types for each size.

Other than KURODA's recommended shaft end finish types described below, additional machining including keyways, tapped holes, and D-cut processing are also available if requested. Please contact KURODA with your orders. Model examples for finished shaft ends are described below.

**Model example:** Unfinished shaft ends (See left figure) → Finished shaft ends

GY1520BS-HULR-1200A → GY1520BS-HULR-1195X1128-CAY  
 ↳ Thread length  
 ↳ Overall screw shaft length

Supported end	Fixed end
Applicable supported end support unit	Applicable fixed end support unit
BUK-10S (Square type)	BUK-12, BUK-12F (Square type)
BUM-10S (Round type)	BUM-12, BUM-12F (Round type)

### • Optional specifications

• Ball screw lubricating unit LUBSEAL can be equipped.

**Model example:** GY1520BS-HULR-1195X1128-CAY

↳ Wiper material S: LUBSEAL

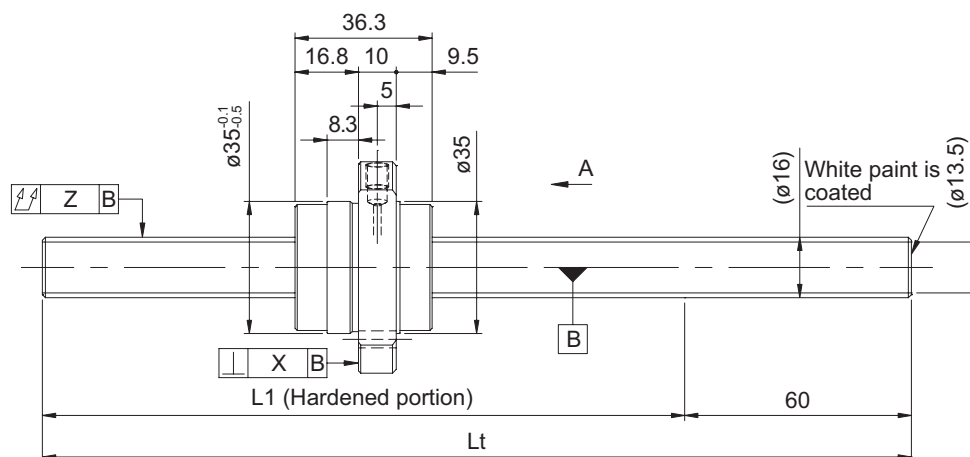
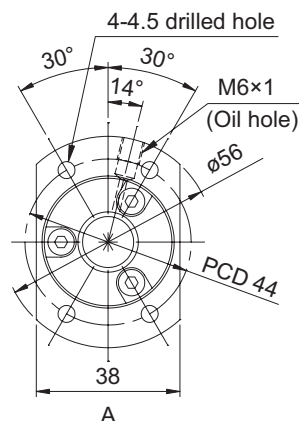
• Anticorrosive black coating (coating thickness: 1 to 2 μm) is available.

Lead accuracy	Accuracy of each part		Mass (kg)
Cumulative lead error	X	Z	
0.05/300	0.025	0.070	1.24
		0.170	2.07
0.21/300	---	0.140	1.24
		0.400	2.07

## GW series (Accuracy grade C7) / GY series (Accuracy grade C10)

### • Ball screw specifications

Shaft diameter (mm) - Lead (mm)	16 - 32	
Number of circuits / Thread direction	0.67 turns 3 circuits / Right-hand	
Ball diameter (mm)	3.175	
Root diameter (mm)	13.5	
Series	GW	GY
Basic dynamic load rating C (N)	4200	
Basic static load rating C0 (N)	7700	
Accuracy grade / Axial clearance symbol	C7 / Y	C10 / Y
Axial clearance (mm)	0.030 or less	0.100 or less
Preload torque (N·cm)	----	
Recirculation system	End cap method	
Wiper	None	
Lubricant	Alvania Grease S2	
Phosphate coating	Nut alone	Screw shaft, nut



Model No. (Unfinished shaft ends)	L1	Lt	Maximum stroke (L1 - nut length)
GW1632QS-HEZR-0600A	540	600	503
GW1632QS-HEZR-1200A	1140	1200	1103
GY1632QS-HEZR-0600A	540	600	503
GY1632QS-HEZR-1200A	1140	1200	1103

• At the time of delivery, grease is inserted inside of the nut, with rust-preventive oil also applied.  
Before and during use, apply lubricant where appropriate.

## Screw shaft diameter ø16, Lead 32 (Round nut)

### • Shaft end finish type

Standard rolled ball screws are available with KURODA's recommended shaft end finish types for each size.

Other than KURODA's recommended shaft end finish types described below, additional machining including keyways, tapped holes, and D-cut processing are also available if requested. Please contact KURODA with your orders. Model examples for finished shaft ends are described below.

**Model example:** Unfinished shaft ends (See left figure) → Finished shaft ends

GY1632QS-HEZR-1200A → GY1632QS-HEZR-1195X1128-CAY

→ Thread length  
→ Overall screw shaft length

Supported end	Fixed end
Applicable supported end support unit	Applicable fixed end support unit
BUK-10S (Square type)	BUK-12, BUK-12F (Square type)
BUM-10S (Round type)	BUM-12, BUM-12F (Round type)

### • Optional specifications

• Anticorrosive black coating (coating thickness: 1 to 2 µm) is available.

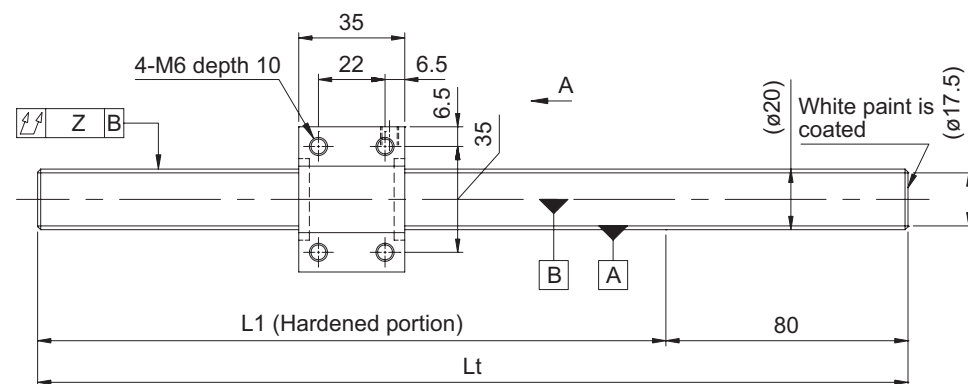
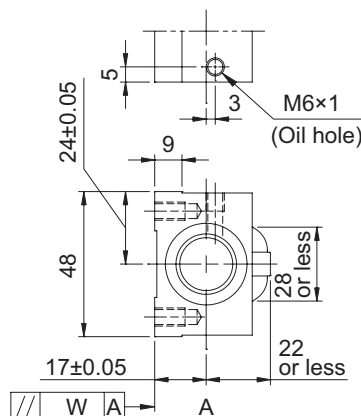
Lead accuracy	Accuracy of each part		Mass (kg)
Cumulative lead error	X	Z	
0.05/300	0.025	0.070	1.24
		0.170	2.19
0.21/300	---	0.140	1.24
		0.400	2.19



## GW series (Accuracy grade C7) / GY series (Accuracy grade C10)

### • Ball screw specifications

Shaft diameter (mm) - Lead (mm)	20 - 5	
Number of circuits / Thread direction	2.5 turns 1 circuit / Right-hand	
Ball diameter (mm)	3.175	
Root diameter (mm)	17.5	
Series	GW	GY
Basic dynamic load rating C (N)	6200	
Basic static load rating C0 (N)	14700	
Accuracy grade / Axial clearance symbol	C7 / Y	C10 / Y
Axial clearance (mm)	0.030 or less	0.100 or less
Preload torque (N·cm)	----	
Recirculation system	Tube method	
Wiper	Lip seal	
Lubricant	Alvania Grease S2	
Phosphate coating	Nut alone	Screw shaft, nut



Model No. (Unfinished shaft ends)	L1	Lt	Maximum stroke (L1 - nut length)
GW2005DS-NKLR-0600A	520	600	485
GW2005DS-NKLR-1200A	1120	1200	1085
GW2005DS-NKLR-2000A	1920	2000	1885
GY2005DS-NKLR-0600A	520	600	485
GY2005DS-NKLR-1200A	1120	1200	1085
GY2005DS-NKLR-2000A	1920	2000	1885

• At the time of delivery, grease is inserted inside of the nut, with rust-preventive oil also applied. Before and during use, apply lubricant where appropriate.

## Screw shaft diameter ø20, Lead 5 (Square nut)

### • Shaft end finish type

Standard rolled ball screws are available with KURODA's recommended shaft end finish types for each size.

Other than KURODA's recommended shaft end finish types described below, additional machining including keyways, tapped holes, and D-cut processing are also available if requested. Please contact KURODA with your orders. Model examples for finished shaft ends are described below.

**Model example:** Unfinished shaft ends (See left figure) → Finished shaft ends

GY2005DS-NKLR-2000A → GY2005DS-NKLR-1995X1908-CAY

→ Thread length  
→ Overall screw shaft length

Supported end	Fixed end
Applicable supported end support unit	Applicable fixed end support unit
BUK-15S (Square type)	BUK-15, BUK-15F (Square type)
BUM-15S (Round type)	BUM-15, BUM-15F (Round type)

### • Optional specifications

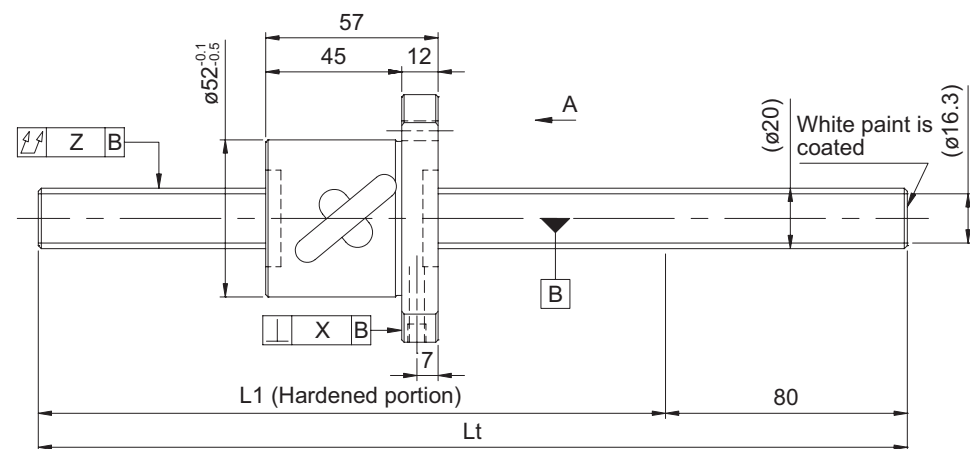
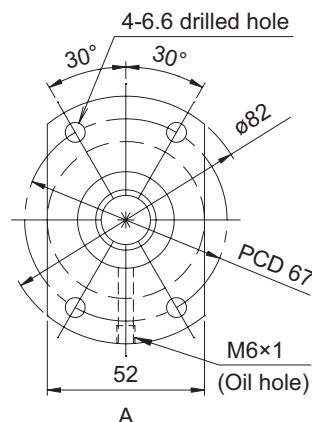
• Anticorrosive black coating (coating thickness: 1 to 2 μm) is available.

Lead accuracy	Accuracy of each part		Mass (kg)
Cumulative lead error	W	Z	
0.05/300	0.017	0.070	1.87
		0.120	3.34
		0.270	5.31
0.21/300	---	0.140	1.87
		0.240	3.34
		0.640	5.31

**GW series (Accuracy grade C7) / GY series (Accuracy grade C10)**

- **Ball screw specifications**

Shaft diameter (mm) - Lead (mm)	20 - 10	
Number of circuits / Thread direction	2.5 turns 1 circuit / Right-hand	
Ball diameter (mm)	4.7625	
Root diameter (mm)	16.3	
Series	GW	GY
Basic dynamic load rating C (N)	10600	
Basic static load rating C0 (N)	22700	
Accuracy grade / Axial clearance symbol	C7 / Y	C10 / Y
Axial clearance (mm)	0.050 or less	0.150 or less
Preload torque (N·cm)	----	
Recirculation system	Tube method	
Wiper	Lip seal	
Lubricant	Alvania Grease S2	
Phosphate coating	Nut alone	Screw shaft, nut



Model No. (Unfinished shaft ends)	L1	Lt	Maximum stroke (L1 - nut length)
GW2010DS-HULR-0600A	520	600	463
GW2010DS-HULR-1200A	1120	1200	1063
GW2010DS-HULR-2000A	1920	2000	1863
GY2010DS-HULR-0600A	520	600	463
GY2010DS-HULR-1200A	1120	1200	1063
GY2010DS-HULR-2000A	1920	2000	1863

- At the time of delivery, grease is inserted inside of the nut, with rust-preventive oil also applied. Before and during use, apply lubricant where appropriate.

**Screw shaft diameter ø20, Lead 10 (Round nut)**

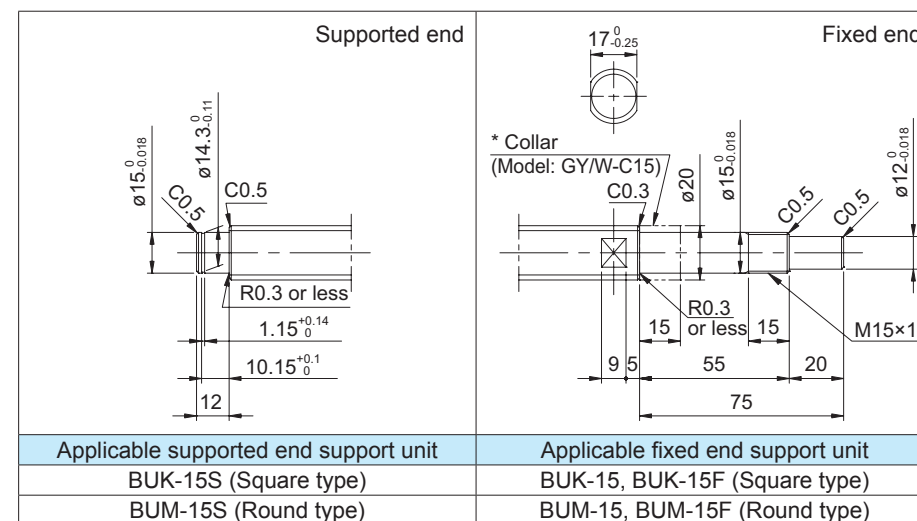
- **Shaft end finish type**

Standard rolled ball screws are available with KURODA's recommended shaft end finish types for each size.

Other than KURODA's recommended shaft end finish types described below, additional machining including keyways, tapped holes, and D-cut processing are also available if requested. Please contact KURODA with your orders. Model examples for finished shaft ends are described below.

**Model example:** Unfinished shaft ends (See left figure) → Finished shaft ends

GY2010DS-HULR-2000A → GY2010DS-HULR-1995X1908-CAY



- **Optional specifications**

- Ball screw lubricating unit LUBSEAL can be equipped.

**Model example:** GY2010DS-HUSR-1995X1908-CAY

↳ Wiper material S: LUBSEAL

- Anticorrosive black coating (coating thickness: 1 to 2  $\mu\text{m}$ ) is available.

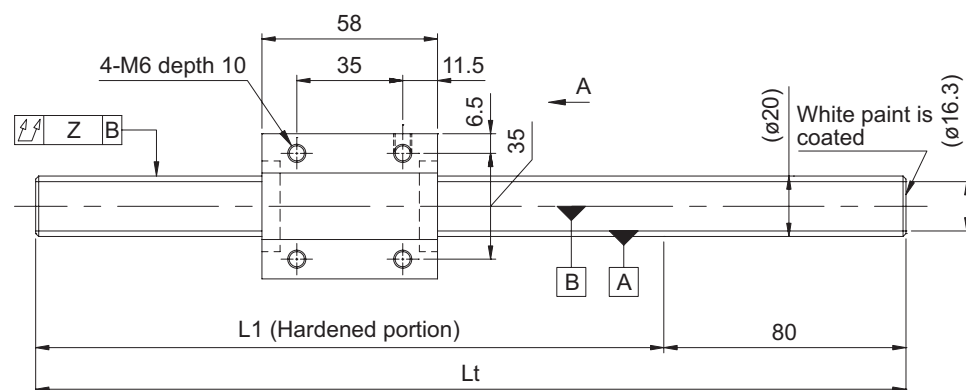
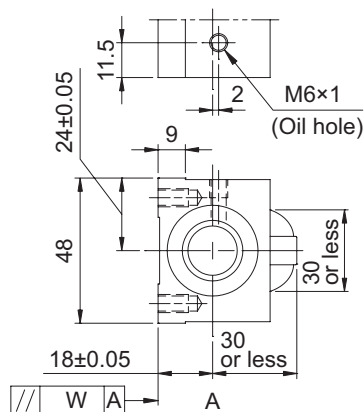
Lead accuracy	Accuracy of each part		Mass (kg)
Cumulative lead error	X	Z	
0.05/300	0.025	0.070	2.47
		0.120	3.95
		0.270	5.92
0.21/300	---	0.140	2.47
		0.240	3.95
		0.640	5.92



## GW series (Accuracy grade C7) / GY series (Accuracy grade C10)

### • Ball screw specifications

Shaft diameter (mm) - Lead (mm)	20 - 10	
Number of circuits / Thread direction	2.5 turns 1 circuit / Right-hand	
Ball diameter (mm)	4.7625	
Root diameter (mm)	16.3	
Series	GW	GY
Basic dynamic load rating C (N)	10600	
Basic static load rating C0 (N)	22700	
Accuracy grade / Axial clearance symbol	C7 / Y	C10 / Y
Axial clearance (mm)	0.050 or less	0.150 or less
Preload torque (N·cm)	----	
Recirculation system	Tube method	
Wiper	Lip seal	
Lubricant	Alvania Grease S2	
Phosphate coating	Nut alone	Screw shaft, nut



Model No. (Unfinished shaft ends)	L1	Lt	Maximum stroke (L1 - nut length)
GW2010DS-NKLR-0600A	520	600	462
GW2010DS-NKLR-1200A	1120	1200	1062
GW2010DS-NKLR-2000A	1920	2000	1862
GY2010DS-NKLR-0600A	520	600	462
GY2010DS-NKLR-1200A	1120	1200	1062
GY2010DS-NKLR-2000A	1920	2000	1862

• At the time of delivery, grease is inserted inside of the nut, with rust-preventive oil also applied.  
Before and during use, apply lubricant where appropriate.

## Screw shaft diameter ø20, Lead 10 (Square nut)

### • Shaft end finish type

Standard rolled ball screws are available with KURODA's recommended shaft end finish types for each size.

Other than KURODA's recommended shaft end finish types described below, additional machining including keyways, tapped holes, and D-cut processing are also available if requested. Please contact KURODA with your orders. Model examples for finished shaft ends are described below.

**Model example:** Unfinished shaft ends (See left figure) → Finished shaft ends

GY2010DS-NKLR-2000A → GY2010DS-NKLR-1995X1908-CAY

→ Thread length  
→ Overall screw shaft length

Supported end	Fixed end
Applicable supported end support unit	Applicable fixed end support unit
BUK-15S (Square type)	BUK-15, BUK-15F (Square type)
BUM-15S (Round type)	BUM-15, BUM-15F (Round type)

### • Optional specifications

• Anticorrosive black coating (coating thickness: 1 to 2 µm) is available.

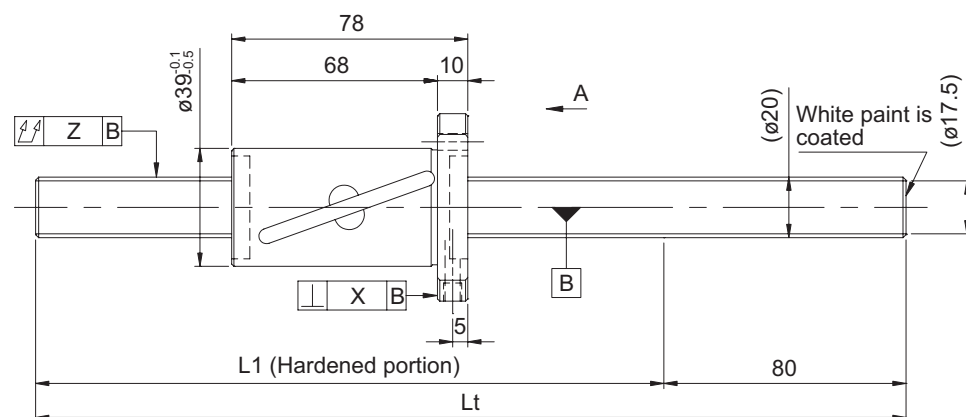
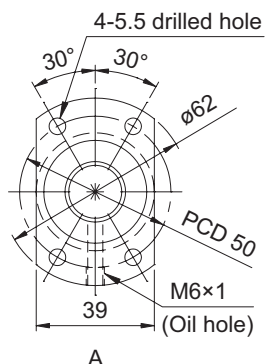
Lead accuracy	Accuracy of each part		Mass (kg)
Cumulative lead error	W	Z	
0.05/300	0.017	0.070	2.20
		0.120	3.67
		0.270	5.64
0.21/300	---	0.140	2.20
		0.240	3.67
		0.640	5.64



## GW series (Accuracy grade C7) / GY series (Accuracy grade C10)

### • Ball screw specifications

Shaft diameter (mm) - Lead (mm)	20 - 20	
Number of circuits / Thread direction	2.5 turns 1 circuit / Right-hand	
Ball diameter (mm)	3.175	
Root diameter (mm)	17.5	
Series	GW	GY
Basic dynamic load rating C (N)	6200	
Basic static load rating C0 (N)	14700	
Accuracy grade / Axial clearance symbol	C7 / Y	C10 / Y
Axial clearance (mm)	0.030 or less	0.100 or less
Preload torque (N·cm)	----	
Recirculation system	Tube method	
Wiper	Lip seal	
Lubricant	Alvania Grease S2	
Phosphate coating	Nut alone	Screw shaft, nut



Model No. (Unfinished shaft ends)	L1	Lt	Maximum stroke (L1 - nut length)
GW2020DS-HULR-0600A	520	600	442
GW2020DS-HULR-1200A	1120	1200	1042
GW2020DS-HULR-2000A	1920	2000	1842
GY2020DS-HULR-0600A	520	600	442
GY2020DS-HULR-1200A	1120	1200	1042
GY2020DS-HULR-2000A	1920	2000	1842

• At the time of delivery, grease is inserted inside of the nut, with rust-preventive oil also applied.  
Before and during use, apply lubricant where appropriate.

## Screw shaft diameter ø20, Lead 20 (Round nut)

### • Shaft end finish type

Standard rolled ball screws are available with KURODA's recommended shaft end finish types for each size.

Other than KURODA's recommended shaft end finish types described below, additional machining including keyways, tapped holes, and D-cut processing are also available if requested. Please contact KURODA with your orders. Model examples for finished shaft ends are described below.

**Model example:** Unfinished shaft ends (See left figure) → Finished shaft ends

GY2020DS-HULR-2000A → GY2020DS-HULR-1995X1908-CAY

→ Thread length  
→ Overall screw shaft length

Supported end	Fixed end
Applicable supported end support unit	Applicable fixed end support unit
BUK-15S (Square type)	BUK-15, BUK-15F (Square type)
BUM-15S (Round type)	BUM-15, BUM-15F (Round type)

### • Optional specifications

• Ball screw lubricating unit LUBSEAL can be equipped.

**Model example:** GY2020DS-HULR-1995X1908-CAY

→ Wiper material S: LUBSEAL

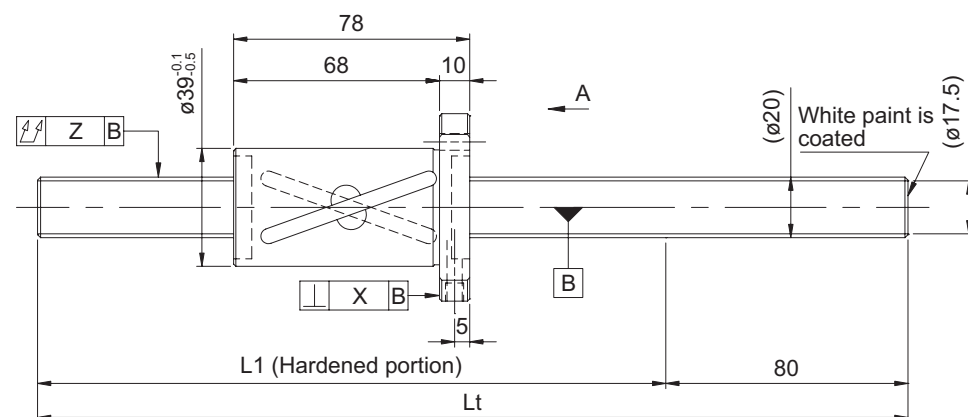
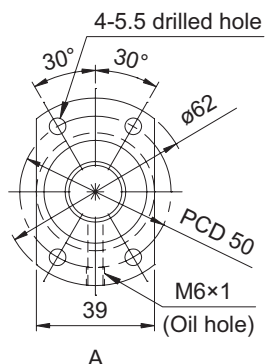
• Anticorrosive black coating (coating thickness: 1 to 2 μm) is available.

Lead accuracy	Accuracy of each part		Mass (kg)
Cumulative lead error	X	Z	
0.05/300	0.025	0.070	2.06
		0.120	3.53
		0.270	5.50
0.21/300	---	0.140	2.06
		0.240	3.53
		0.640	5.50

**GW series (Accuracy grade C7) / GY series (Accuracy grade C10)**

- **Ball screw specifications**

Shaft diameter (mm) - Lead (mm)	20 - 20	
Number of circuits / Thread direction	2.5 turns 2 circuits / Right-hand	
Ball diameter (mm)	3.175	
Root diameter (mm)	17.5	
Series	GW	GY
Basic dynamic load rating C (N)	11200	
Basic static load rating C0 (N)	29400	
Accuracy grade / Axial clearance symbol	C7 / Y	C10 / Y
Axial clearance (mm)	0.030 or less	0.100 or less
Preload torque (N·cm)	----	
Recirculation system	Tube method	
Wiper	Lip seal	
Lubricant	Alvania Grease S2	
Phosphate coating	Nut alone	Screw shaft, nut



Model No. (Unfinished shaft ends)	L1	Lt	Maximum stroke (L1 - nut length)
GW2020ES-HULR-0600A	520	600	442
GW2020ES-HULR-1200A	1120	1200	1042
GW2020ES-HULR-2000A	1920	2000	1842
GY2020ES-HULR-0600A	520	600	442
GY2020ES-HULR-1200A	1120	1200	1042
GY2020ES-HULR-2000A	1920	2000	1842

- At the time of delivery, grease is inserted inside of the nut, with rust-preventive oil also applied. Before and during use, apply lubricant where appropriate.

**Screw shaft diameter ø20, Lead 20 (Round nut)**


- **Shaft end finish type**

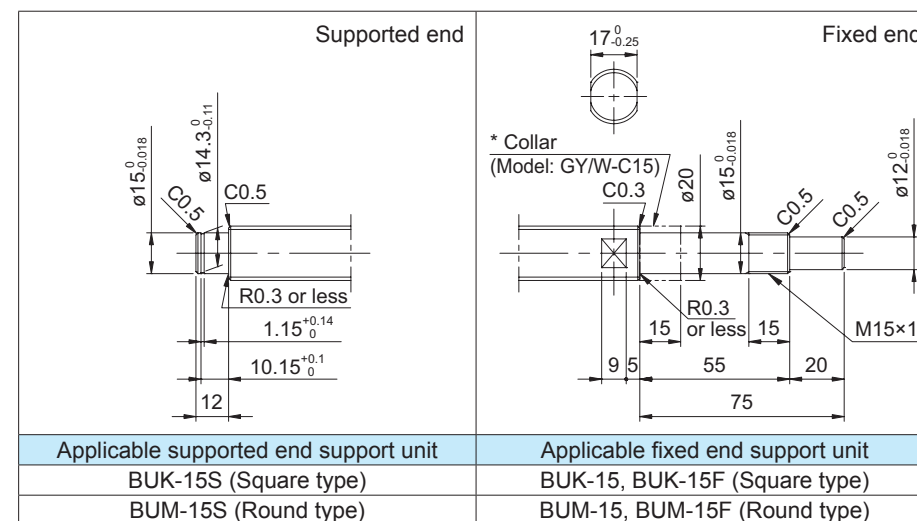
Standard rolled ball screws are available with KURODA's recommended shaft end finish types for each size.

Other than KURODA's recommended shaft end finish types described below, additional machining including keyways, tapped holes, and D-cut processing are also available if requested. Please contact KURODA with your orders. Model examples for finished shaft ends are described below.

**Model example:** Unfinished shaft ends (See left figure) → Finished shaft ends

GY2020ES-HULR-2000A → GY2020ES-HULR-1995X1908-CAY





- **Optional specifications**

- Ball screw lubricating unit LUBSEAL can be equipped.

**Model example:** GY2020ES-HUSR-1995X1908-CAY

↳ Wiper material S: LUBSEAL

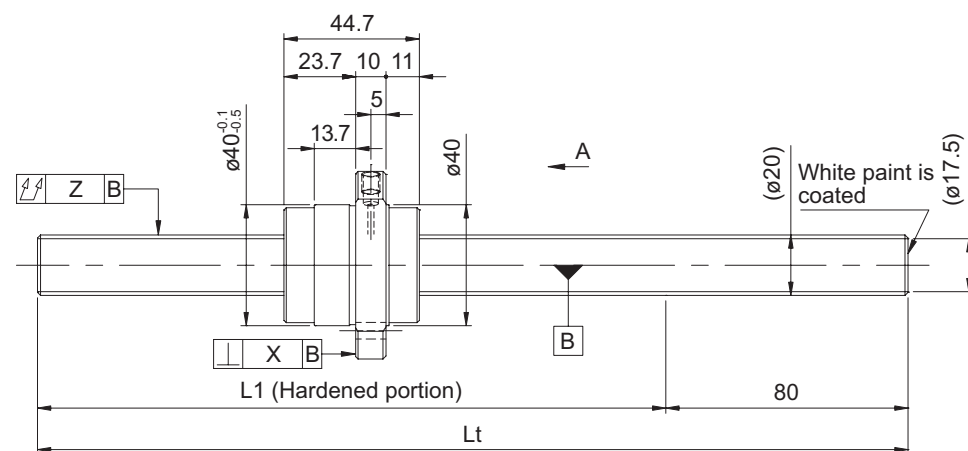
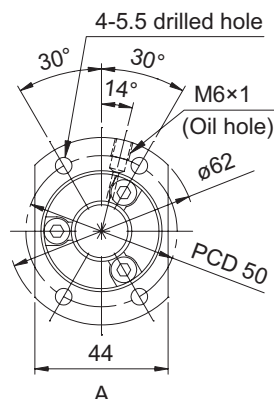
- Anticorrosive black coating (coating thickness: 1 to 2  $\mu\text{m}$ ) is available.

Lead accuracy	Accuracy of each part		Mass (kg)
Cumulative lead error	X	Z	
0.05/300	0.025	0.070	2.06
		0.120	3.53
		0.270	5.50
0.21/300	---	0.140	2.06
		0.240	3.53
		0.640	5.50

## GW series (Accuracy grade C7) / GY series (Accuracy grade C10)

### • Ball screw specifications

Shaft diameter (mm) - Lead (mm)	20 - 40	
Number of circuits / Thread direction	0.67 turns 3 circuits / Right-hand	
Ball diameter (mm)	3.175	
Root diameter (mm)	17.5	
Series	GW	GY
Basic dynamic load rating C (N)	4700	
Basic static load rating C0 (N)	10300	
Accuracy grade / Axial clearance symbol	C7 / Y	C10 / Y
Axial clearance (mm)	0.030 or less	0.100 or less
Preload torque (N·cm)	----	
Recirculation system	End cap method	
Wiper	None	
Lubricant	Alvania Grease S2	
Phosphate coating	Nut alone	Screw shaft, nut



Model No. (Unfinished shaft ends)	L1	Lt	Maximum stroke (L1 - nut length)
GW2040QS-HEZR-0600A	520	600	475
GW2040QS-HEZR-1200A	1120	1200	1075
GW2040QS-HEZR-2000A	1920	2000	1875
GY2040QS-HEZR-0600A	520	600	475
GY2040QS-HEZR-1200A	1120	1200	1075
GY2040QS-HEZR-2000A	1920	2000	1875

• At the time of delivery, grease is inserted inside of the nut, with rust-preventive oil also applied.  
Before and during use, apply lubricant where appropriate.

## Screw shaft diameter ø20, Lead 40 (Round nut)

### • Shaft end finish type

Standard rolled ball screws are available with KURODA's recommended shaft end finish types for each size.

Other than KURODA's recommended shaft end finish types described below, additional machining including keyways, tapped holes, and D-cut processing are also available if requested. Please contact KURODA with your orders. Model examples for finished shaft ends are described below.

**Model example:** Unfinished shaft ends (See left figure) → Finished shaft ends

GY2040QS-HEZR-2000A → GY2040QS-HEZR-1995X1908-CAY

→ Thread length  
→ Overall screw shaft length

Supported end	Fixed end
Applicable supported end support unit	Applicable fixed end support unit
BUK-15S (Square type)	BUK-15, BUK-15F (Square type)
BUM-15S (Round type)	BUM-15, BUM-15F (Round type)

### • Optional specifications

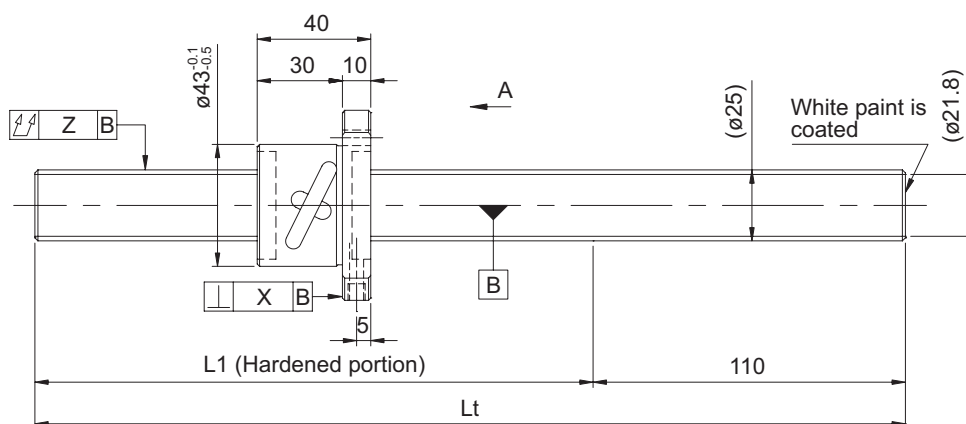
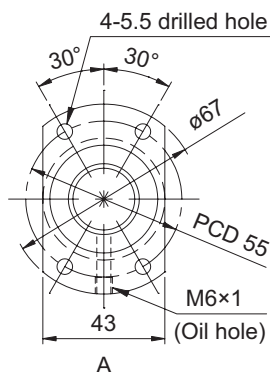
• Anticorrosive black coating (coating thickness: 1 to 2 μm) is available.

Lead accuracy	Accuracy of each part		Mass (kg)
Cumulative lead error	X	Z	
0.05/300	0.025	0.070	1.90
		0.120	3.37
		0.270	5.34
0.21/300	---	0.140	1.90
		0.240	3.37
		0.640	5.34

## GW series (Accuracy grade C7) / GY series (Accuracy grade C10)

### • Ball screw specifications

Shaft diameter (mm) - Lead (mm)	25 - 5	
Number of circuits / Thread direction	2.5 turns 1 circuit / Right-hand	
Ball diameter (mm)	3.175	
Root diameter (mm)	21.8	
Series	GW	GY
Basic dynamic load rating C (N)	6600	
Basic static load rating C0 (N)	18700	
Accuracy grade / Axial clearance symbol	C7 / Y	C10 / Y
Axial clearance (mm)	0.030 or less	0.100 or less
Preload torque (N·cm)	----	
Recirculation system	Tube method	
Wiper	Lip seal	
Lubricant	Alvania Grease S2	
Phosphate coating	Nut alone	Screw shaft, nut



Model No. (Unfinished shaft ends)	L1	Lt	Maximum stroke (L1 - nut length)
GW2505DS-HULR-1000A	890	1000	850
GW2505DS-HULR-2000A	1890	2000	1850
GW2505DS-HULR-2500A	2390	2500	2350
GY2505DS-HULR-1000A	890	1000	850
GY2505DS-HULR-2000A	1890	2000	1850
GY2505DS-HULR-2500A	2390	2500	2350

• At the time of delivery, grease is inserted inside of the nut, with rust-preventive oil also applied.  
Before and during use, apply lubricant where appropriate.

## Screw shaft diameter ø25, Lead 5 (Round nut)

### • Shaft end finish type

Standard rolled ball screws are available with KURODA's recommended shaft end finish types for each size.

Other than KURODA's recommended shaft end finish types described below, additional machining including keyways, tapped holes, and D-cut processing are also available if requested. Please contact KURODA with your orders. Model examples for finished shaft ends are described below.

**Model example:** Unfinished shaft ends (See left figure) → Finished shaft ends

GY2505DS-HULR-2500A → GY2505DS-HULR-2490X2372-CAY

Thread length  
Overall screw shaft length

Supported end	Fixed end
Applicable supported end support unit	Applicable fixed end support unit
BUK-20S (Square type)	BUK-20, BUK-20F (Square type)
BUM-20S (Round type)	BUM-20, BUM-20F (Round type)

### • Optional specifications

• Ball screw lubricating unit LUBSEAL can be equipped.

**Model example:** GY2505DS-HUSR-2490X2372-CAY

Wiper material S: LUBSEAL

• Anticorrosive black coating (coating thickness: 1 to 2 μm) is available.

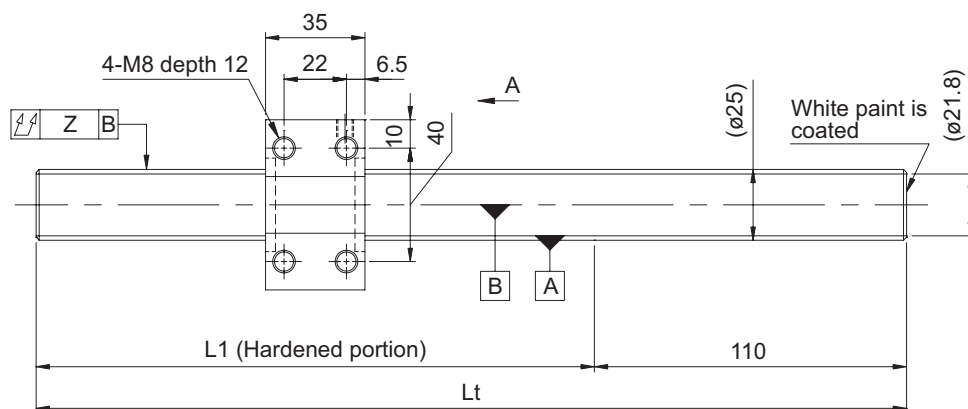
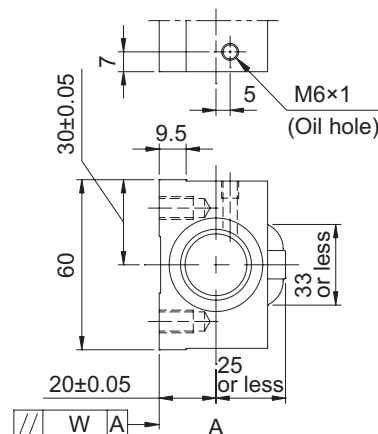
Lead accuracy	Accuracy of each part		Mass (kg)
Cumulative lead error	X	Z	
0.05/300	0.025	0.080	4.26
		0.200	8.10
		0.260	10.02
0.21/300	---	0.160	4.26
		0.400	8.10
		0.640	10.02



## GW series (Accuracy grade C7) / GY series (Accuracy grade C10)

### • Ball screw specifications

Shaft diameter (mm) - Lead (mm)	25 - 5	
Number of circuits / Thread direction	2.5 turns 1 circuit / Right-hand	
Ball diameter (mm)	3.175	
Root diameter (mm)	21.8	
Series	GW	GY
Basic dynamic load rating C (N)	6600	
Basic static load rating C0 (N)	18700	
Accuracy grade / Axial clearance symbol	C7 / Y	C10 / Y
Axial clearance (mm)	0.030 or less	0.100 or less
Preload torque (N·cm)	----	
Recirculation system	Tube method	
Wiper	Lip seal	
Lubricant	Alvania Grease S2	
Phosphate coating	Nut alone	Screw shaft, nut



Model No. (Unfinished shaft ends)	L1	Lt	Maximum stroke (L1 - nut length)
GW2505DS-NKLR-1000A	890	1000	855
GW2505DS-NKLR-2000A	1890	2000	1855
GW2505DS-NKLR-2500A	2390	2500	2355
GY2505DS-NKLR-1000A	890	1000	855
GY2505DS-NKLR-2000A	1890	2000	1855
GY2505DS-NKLR-2500A	2390	2500	2355

• At the time of delivery, grease is inserted inside of the nut, with rust-preventive oil also applied.  
Before and during use, apply lubricant where appropriate.

## Screw shaft diameter ø25, Lead 5 (Square nut)

### • Shaft end finish type

Standard rolled ball screws are available with KURODA's recommended shaft end finish types for each size.

Other than KURODA's recommended shaft end finish types described below, additional machining including keyways, tapped holes, and D-cut processing are also available if requested. Please contact KURODA with your orders. Model examples for finished shaft ends are described below.

**Model example:** Unfinished shaft ends (See left figure) → Finished shaft ends

GY2505DS-NKLR-2500A → GY2505DS-NKLR-2490X2372-CAY

→ Thread length  
→ Overall screw shaft length

Supported end	Fixed end
Applicable supported end support unit	Applicable fixed end support unit
BUK-20S (Square type)	BUK-20, BUK-20F (Square type)
BUM-20S (Round type)	BUM-20, BUM-20F (Round type)

### • Optional specifications

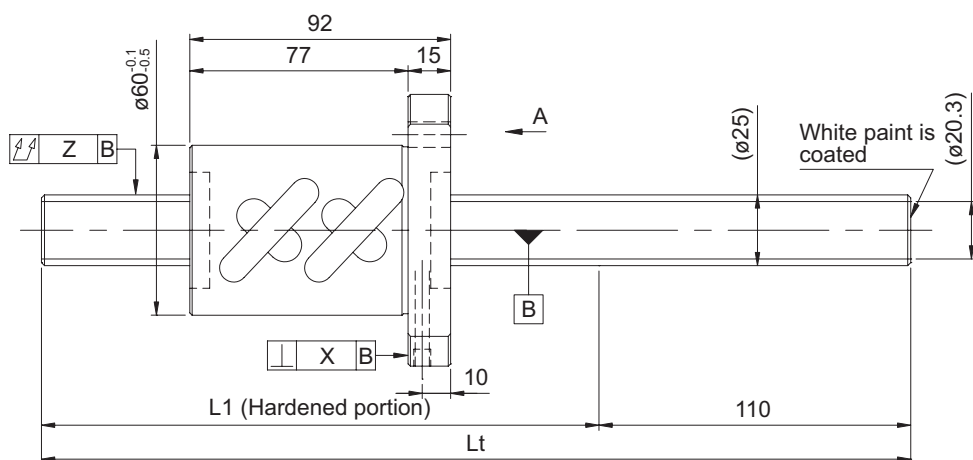
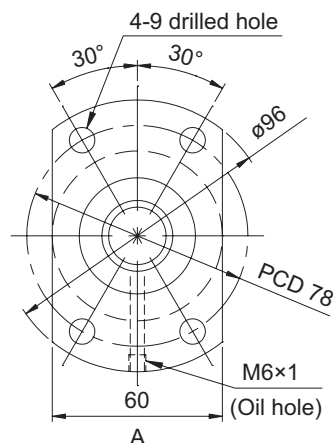
• Anticorrosive black coating (coating thickness: 1 to 2 µm) is available.

Lead accuracy	Accuracy of each part		Mass (kg)
Cumulative lead error	W	Z	
0.05/300	0.017	0.080	4.40
		0.200	8.24
		0.260	10.17
0.21/300	---	0.160	4.40
		0.400	8.24
		0.640	10.17



**Screw shaft  
diameter  $\varnothing 25$**

Shaft diameter (mm) - Lead (mm)	25 - 10	
Number of circuits / Thread direction	2.5 turns 2 circuits / Right-hand	
Ball diameter (mm)	6.35	
Root diameter (mm)	20.3	
Series	GW	GY
Basic dynamic load rating C (N)	27500	
Basic static load rating C0 (N)	76300	
Accuracy grade / Axial clearance symbol	C7 / Y	C10 / Y
Axial clearance (mm)	0.070 or less	0.200 or less
Preload torque (N·cm)	----	
Recirculation system	Tube method	
Wiper	Lip seal	
Lubricant	Alvania Grease S2	
Phosphate coating	Nut alone	Screw shaft, nut



Model No. (Unfinished shaft ends)	L1	Lt	Maximum stroke (L1 - nut length)
GW2510ES-HULR-1000A	890	1000	798
GW2510ES-HULR-2000A	1890	2000	1798
GW2510ES-HULR-2500A	2390	2500	2298
GY2510ES-HULR-1000A	890	1000	798
GY2510ES-HULR-2000A	1890	2000	1798
GY2510ES-HULR-2500A	2390	2500	2298

D-72

**Screw shaft  
diameter  $\varnothing 25$**

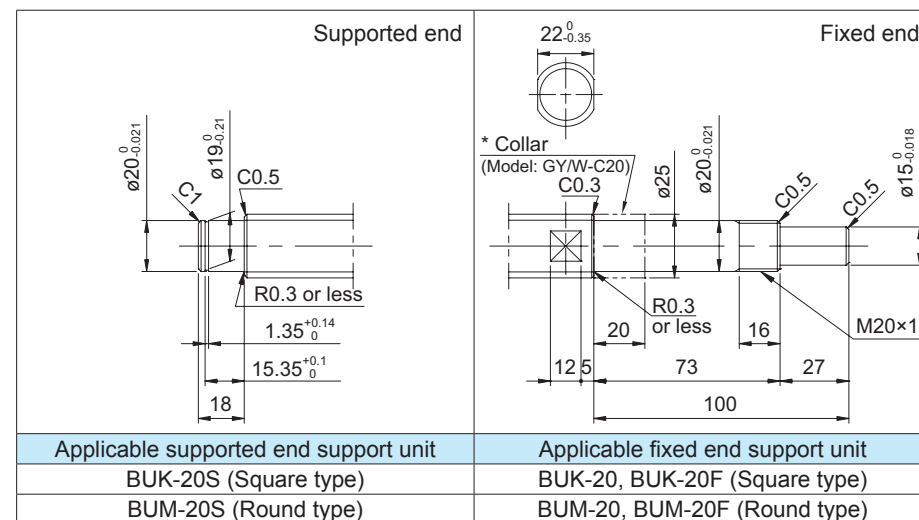
Standard rolled ball screws are available with KURODA's recommended shaft end finish types for each size.

Other than KURODA's recommended shaft end finish types described below, additional machining including keyways, tapped holes, and D-cut processing are also available if requested. Please contact KURODA with your orders. Model examples for finished shaft ends are described below.

**Model example:** Unfinished shaft ends (See left figure) → Finished shaft ends

GY2510ES-HULR-2500A → GY2510ES-HULR-2490X2372-CAY

→ Thread length  
→ Overall screw shaft length



- Ball screw lubricating unit LUBSEAL can be equipped.

**Model example:** GY2510ES-HUSR-2490X2372-CAY

↳ Wiper material S: LUBSEAL

- Anticorrosive black coating (coating thickness: 1 to 2  $\mu\text{m}$ ) is available.

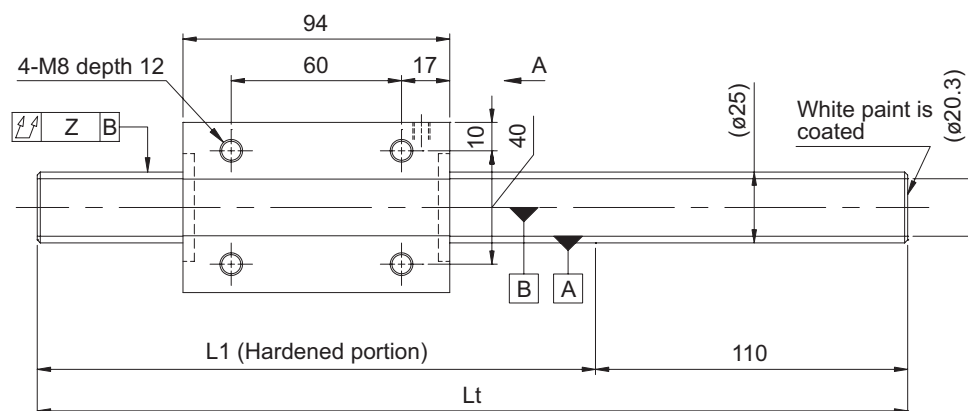
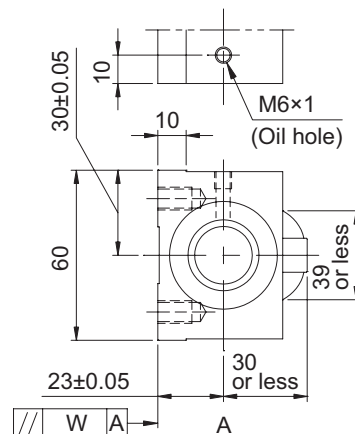
Lead accuracy	Accuracy of each part		Mass (kg)
Cumulative lead error	X	Z	
0.05/300	0.025	0.080	5.70
		0.200	9.54
		0.260	11.46
0.21/300	---	0.160	5.70
		0.400	9.54
		0.640	11.46



## GW series (Accuracy grade C7) / GY series (Accuracy grade C10)

### • Ball screw specifications

Shaft diameter (mm) - Lead (mm)	25 - 10	
Number of circuits / Thread direction	2.5 turns 2 circuits / Right-hand	
Ball diameter (mm)	6.35	
Root diameter (mm)	20.3	
Series	GW	GY
Basic dynamic load rating C (N)	27500	
Basic static load rating C0 (N)	76300	
Accuracy grade / Axial clearance symbol	C7 / Y	C10 / Y
Axial clearance (mm)	0.070 or less	0.200 or less
Preload torque (N·cm)	---	
Recirculation system	Tube method	
Wiper	Lip seal	
Lubricant	Alvania Grease S2	
Phosphate coating	Nut alone	Screw shaft, nut



Model No. (Unfinished shaft ends)	L1	Lt	Maximum stroke (L1 - nut length)
GW2510ES-NKLR-1000A	890	1000	796
GW2510ES-NKLR-2000A	1890	2000	1796
GW2510ES-NKLR-2500A	2390	2500	2296
GY2510ES-NKLR-1000A	890	1000	796
GY2510ES-NKLR-2000A	1890	2000	1796
GY2510ES-NKLR-2500A	2390	2500	2296

• At the time of delivery, grease is inserted inside of the nut, with rust-preventive oil also applied.  
Before and during use, apply lubricant where appropriate.

## Screw shaft diameter ø25, Lead 10 (Square nut)

### • Shaft end finish type

Standard rolled ball screws are available with KURODA's recommended shaft end finish types for each size.

Other than KURODA's recommended shaft end finish types described below, additional machining including keyways, tapped holes, and D-cut processing are also available if requested. Please contact KURODA with your orders. Model examples for finished shaft ends are described below.

**Model example:** Unfinished shaft ends (See left figure) → Finished shaft ends

GY2510ES-NKLR-2500A → GY2510ES-NKLR-2490X2372-CAY

→ Thread length  
→ Overall screw shaft length

Supported end	Fixed end
Applicable supported end support unit	Applicable fixed end support unit
BUK-20S (Square type)	BUK-20, BUK-20F (Square type)
BUM-20S (Round type)	BUM-20, BUM-20F (Round type)

### • Optional specifications

• Anticorrosive black coating (coating thickness: 1 to 2 µm) is available.

Lead accuracy	Accuracy of each part		Mass (kg)
Cumulative lead error	W	Z	
0.05/300	0.017	0.080	5.74
		0.200	9.59
		0.260	11.51
0.21/300	---	0.160	5.74
		0.400	9.59
		0.640	11.51

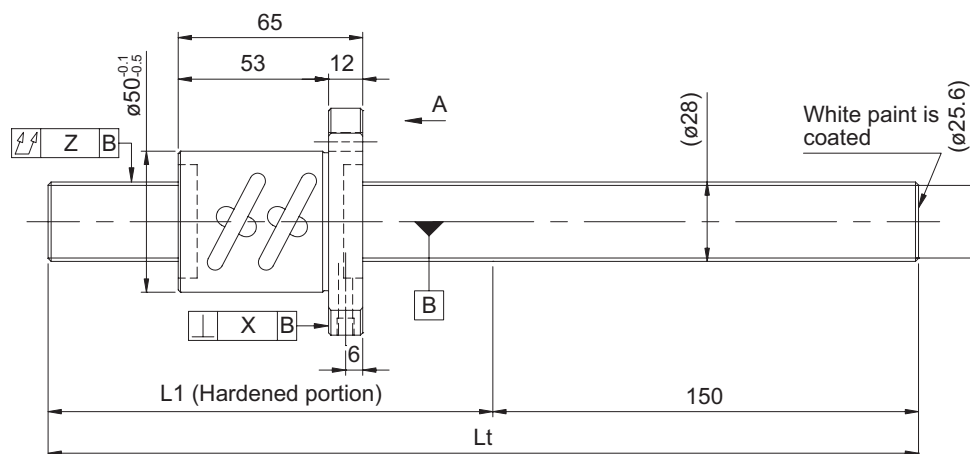
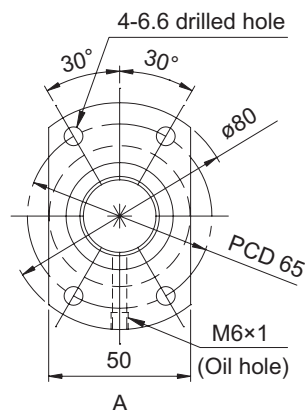




## GY series (Accuracy grade C10)

### • Ball screw specifications

Shaft diameter (mm) - Lead (mm)	28 - 6
Number of circuits / Thread direction	2.5 turns 2 circuits / Right-hand
Ball diameter (mm)	3.175
Root diameter (mm)	25.6
Series	GY
Basic dynamic load rating C (N)	12100
Basic static load rating C0 (N)	42300
Accuracy grade / Axial clearance symbol	C10 / Y
Axial clearance (mm)	0.100 or less
Preload torque (N·cm)	----
Recirculation system	Tube method
Wiper	Brush wiper
Lubricant	Alvania Grease S2
Phosphate coating	Screw shaft, nut



Model No. (Unfinished shaft ends)	L1	Lt	Maximum stroke (L1 - nut length)
GY2806ES-HUBR-1000A	850	1000	785
GY2806ES-HUBR-2000A	1850	2000	1785
GY2806ES-HUBR-2500A	2350	2500	2285

• At the time of delivery, grease is inserted inside of the nut, with rust-preventive oil also applied. Before and during use, apply lubricant where appropriate.

## Screw shaft diameter ø28, Lead 6 (Round nut)

### • Shaft end finish type

Standard rolled ball screws are available with KUROMA's recommended shaft end finish types for each size.

Other than KUROMA's recommended shaft end finish types described below, additional machining including keyways, tapped holes, and D-cut processing are also available if requested. Please contact KUROMA with your orders. Model examples for finished shaft ends are described below.

**Model example:** Unfinished shaft ends (See left figure) → Finished shaft ends

GY2806ES-HUBR-2500A → GY2806ES-HUBR-2450X2332-CAY

→ Thread length  
→ Overall screw shaft length

Supported end	Fixed end
Applicable supported end support unit	Applicable fixed end support unit
BUK-20S (Square type)	BUK-20, BUK-20F (Square type)
BUM-20S (Round type)	BUM-20, BUM-20F (Round type)

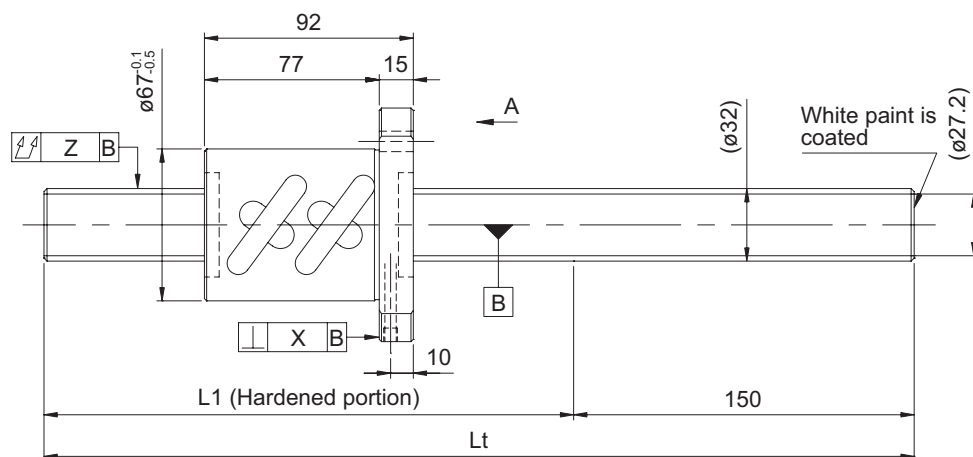
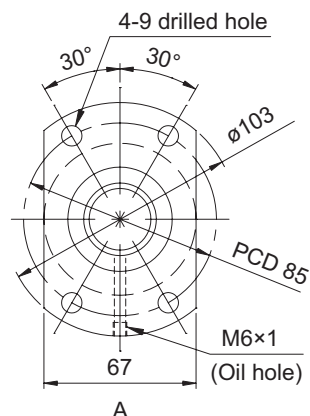
### • Optional specifications

• Anticorrosive black coating (coating thickness: 1 to 2 µm) is available.

Lead accuracy	Accuracy of each part		Mass (kg)
Cumulative lead error	X	Z	
0.21/300	---	0.120	5.63
		0.240	10.45
		0.640	12.86

- **Ball screw specifications**

Shaft diameter (mm) - Lead (mm)	32 - 10
Number of circuits / Thread direction	2.5 turns 2 circuits / Right-hand
Ball diameter (mm)	6.35
Root diameter (mm)	27.2
Series	GY
Basic dynamic load rating C (N)	32800
Basic static load rating C0 (N)	86700
Accuracy grade / Axial clearance symbol	C10 / Y
Axial clearance (mm)	0.200 or less
Preload torque (N·cm)	----
Recirculation system	Tube method
Wiper	Brush wiper
Lubricant	Alvania Grease S2
Phosphate coating	Screw shaft, nut



Model No. (Unfinished shaft ends)	L1	Lt	Maximum stroke (L1 - nut length)
GY3210ES-HUBR-1000A	850	1000	758
GY3210ES-HUBR-2000A	1850	2000	1758
GY3210ES-HUBR-3000A	2850	3000	2758

- At the time of delivery, grease is inserted inside of the nut, with rust-preventive oil also applied. Before and during use, apply lubricant where appropriate.

**Screw shaft diameter ø32, Lead 10 (Round nut)**

- **Shaft end finish type**

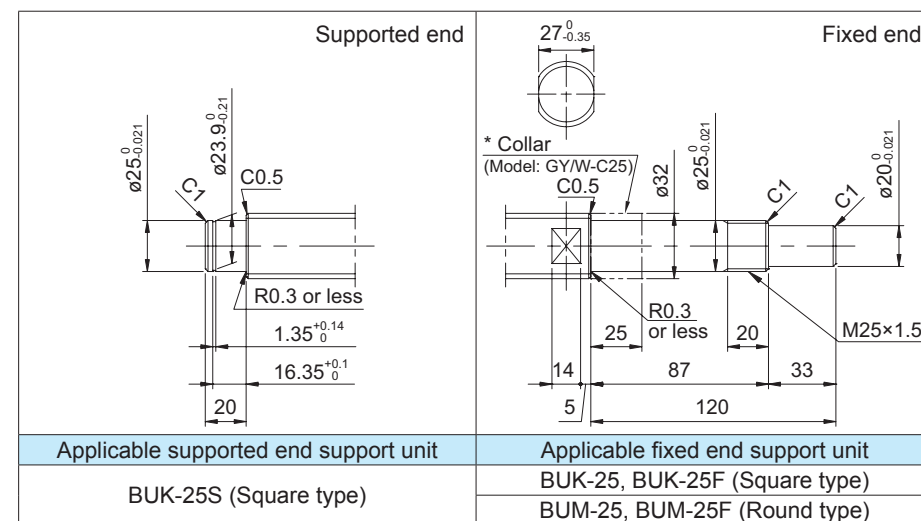
Standard rolled ball screws are available with KURODA's recommended shaft end finish types for each size.

Other than KURODA's recommended shaft end finish types described below, additional machining including keyways, tapped holes, and D-cut processing are also available if requested. Please contact KURODA with your orders. Model examples for finished shaft ends are described below.

**Model example:** Unfinished shaft ends (See left figure) → Finished shaft ends

GY3210ES-HUBR-3000A → GY3210ES-HUBR-2970X2830-CAY

Thread length  
 Overall screw shaft length



- **Optional specifications**

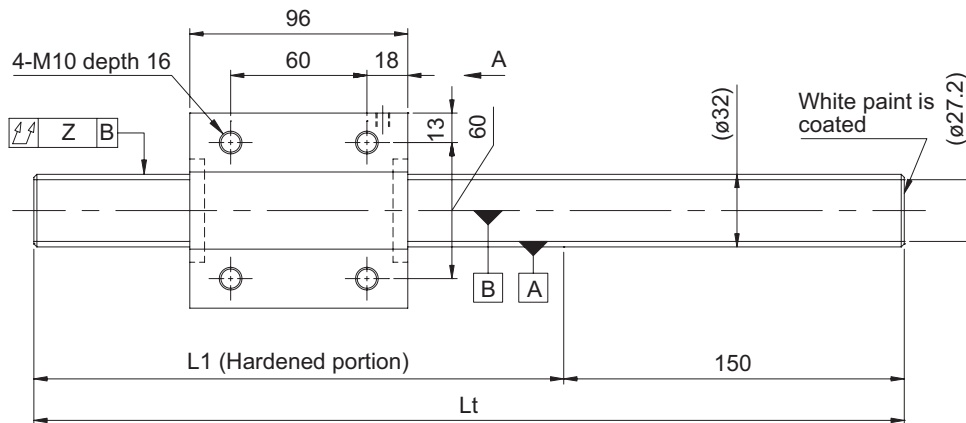
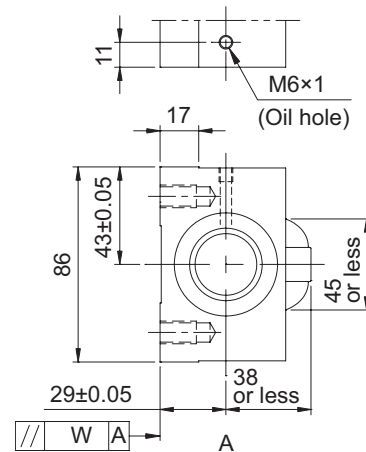
- Anticorrosive black coating (coating thickness: 1 to 2  $\mu\text{m}$ ) is available.

Lead accuracy	Accuracy of each part		Mass (kg)
Cumulative lead error	X	Z	
0.21/300	---	0.120	8.44
		0.240	14.73
		0.640	21.03

## GY series (Accuracy grade C10)

- **Ball screw specifications**

Shaft diameter (mm) - Lead (mm)	32 - 10
Number of circuits / Thread direction	2.5 turns 2 circuits / Right-hand
Ball diameter (mm)	6.35
Root diameter (mm)	27.2
Series	GY
Basic dynamic load rating C (N)	32800
Basic static load rating C0 (N)	86700
Accuracy grade / Axial clearance symbol	C10 / Y
Axial clearance (mm)	0.200 or less
Preload torque (N·cm)	----
Recirculation system	Tube method
Wiper	Brush wiper
Lubricant	Alvania Grease S2
Phosphate coating	Screw shaft, nut



Model No. (Unfinished shaft ends)	L1	Lt	Maximum stroke (L1 - nut length)
GY3210ES-NKBR-1000A	850	1000	754
GY3210ES-NKBR-2000A	1850	2000	1754
GY3210ES-NKBR-3000A	2850	3000	2754

- At the time of delivery, grease is inserted inside of the nut, with rust-preventive oil also applied. Before and during use, apply lubricant where appropriate.

**Screw shaft diameter ø32, Lead 10 (Square nut)**

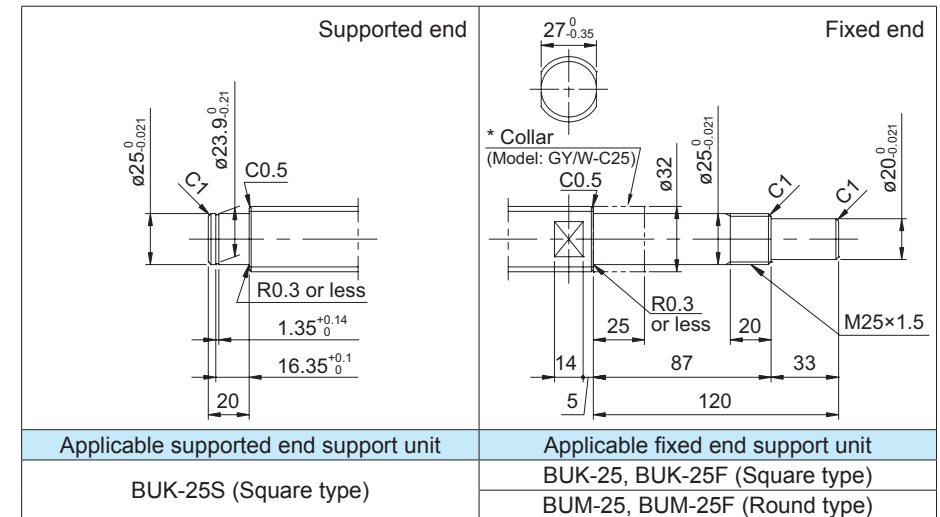
- **Shaft end finish type**

Standard rolled ball screws are available with KURODA's recommended shaft end finish types for each size.

Other than KURODA's recommended shaft end finish types described below, additional machining including keyways, tapped holes, and D-cut processing are also available if requested. Please contact KURODA with your orders. Model examples for finished shaft ends are described below.

**Model example:** Unfinished shaft ends (See left figure) → Finished shaft ends

GY3210ES-NKBR-3000A → GY3210ES-NKBR-2970X2830-CAY  
 ↳ Thread length  
 ↳ Overall screw shaft length



- **Optional specifications**

- Anticorrosive black coating (coating thickness: 1 to 2  $\mu\text{m}$ ) is available.

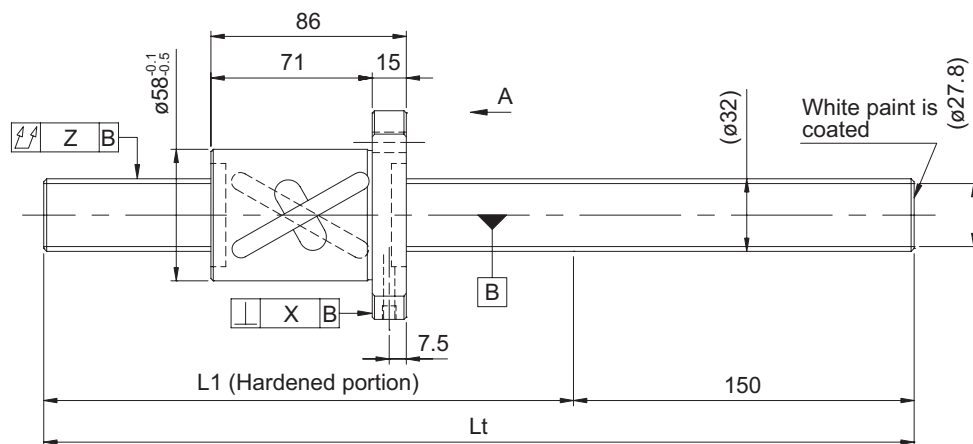
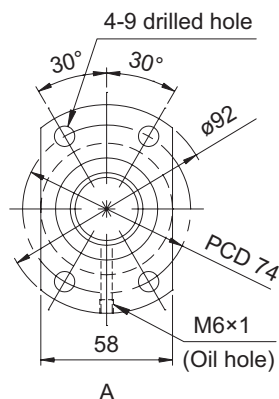
Lead accuracy	Accuracy of each part		Mass (kg)
Cumulative lead error	X	Z	
0.21/300	---	0.120	9.79
		0.240	16.08
		0.640	22.38



### GY series (Accuracy grade C10)

- **Ball screw specifications**

Shaft diameter (mm) - Lead (mm)	32 - 32
Number of circuits / Thread direction	1.5 turns 2 circuits / Right-hand
Ball diameter (mm)	4.7625
Root diameter (mm)	27.8
Series	GY
Basic dynamic load rating C (N)	14600
Basic static load rating C0 (N)	38900
Accuracy grade / Axial clearance symbol	C10 / Y
Axial clearance (mm)	0.150 or less
Preload torque (N·cm)	----
Recirculation system	Tube method
Wiper	Brush wiper
Lubricant	Alvania Grease S2
Phosphate coating	Screw shaft, nut



Model No. (Unfinished shaft ends)	L1	Lt	Maximum stroke (L1 - nut length)
GY3232BS-HUBR-1000A	850	1000	764
GY3232BS-HUBR-2000A	1850	2000	1764
GY3232BS-HUBR-3000A	2850	3000	2764

- At the time of delivery, grease is inserted inside of the nut, with rust-preventive oil also applied. Before and during use, apply lubricant where appropriate.

**Screw shaft diameter ø32, Lead 32 (Round nut)**

- **Shaft end finish type**

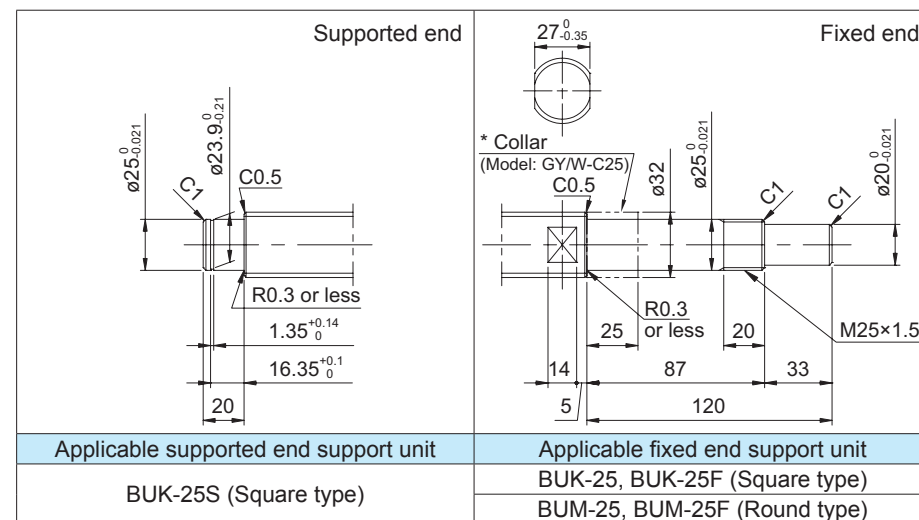
Standard rolled ball screws are available with KURODA's recommended shaft end finish types for each size.

Other than KURODA's recommended shaft end finish types described below, additional machining including keyways, tapped holes, and D-cut processing are also available if requested. Please contact KURODA with your orders. Model examples for finished shaft ends are described below.

**Model example:** Unfinished shaft ends (See left figure) → Finished shaft ends

GY3232BS-HUBR-3000A → GY3232BS-HUBR-2970X2830-CAY

Thread length  
Overall screw shaft length



- **Optional specifications**

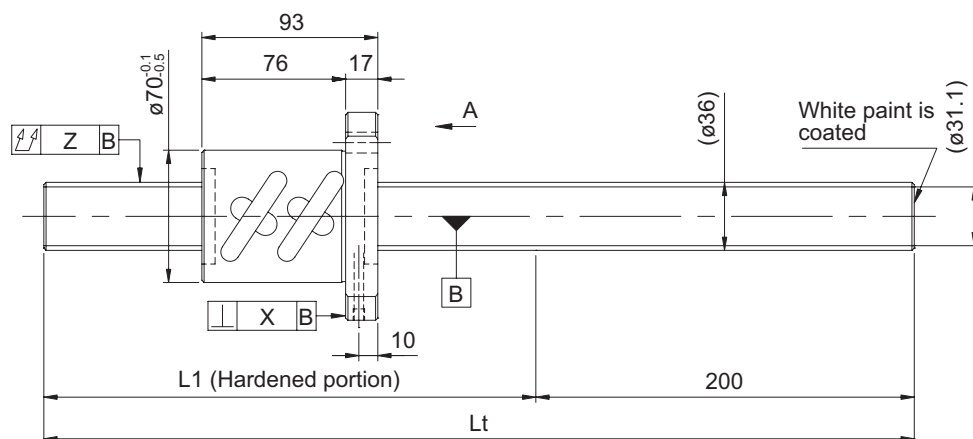
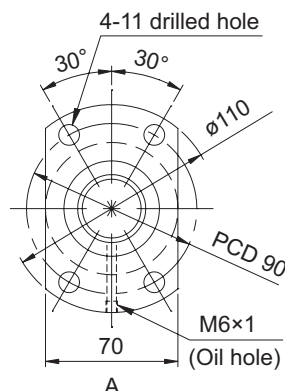
- Anticorrosive black coating (coating thickness: 1 to 2  $\mu\text{m}$ ) is available.

Lead accuracy	Accuracy of each part		Mass (kg)
Cumulative lead error	X	Z	
0.21/300	---	0.120	7.72
		0.240	14.01
		0.640	20.31

## GY series (Accuracy grade C10)

### • Ball screw specifications

Shaft diameter (mm) - Lead (mm)	36 - 10
Number of circuits / Thread direction	2.5 turns 2 circuits / Right-hand
Ball diameter (mm)	6.350
Root diameter (mm)	31.1
Series	GY
Basic dynamic load rating C (N)	35100
Basic static load rating C0 (N)	98200
Accuracy grade / Axial clearance symbol	C10 / Y
Axial clearance (mm)	0.200 or less
Preload torque (N·cm)	----
Recirculation system	Tube method
Wiper	Brush wiper
Lubricant	Alvania Grease S2
Phosphate coating	Screw shaft, nut



Model No. (Unfinished shaft ends)	L1	Lt	Maximum stroke (L1 - nut length)
GY3610ES-HUBR-1000A	800	1000	707
GY3610ES-HUBR-2000A	1800	2000	1707
GY3610ES-HUBR-3000A	2800	3000	2707

• At the time of delivery, grease is inserted inside of the nut, with rust-preventive oil also applied. Before and during use, apply lubricant where appropriate.

## Screw shaft diameter $\phi 36$ , Lead 10 (Round nut)

### • Shaft end finish type

Standard rolled ball screws are available with KURODA's recommended shaft end finish types for each size.

Other than KURODA's recommended shaft end finish types described below, additional machining including keyways, tapped holes, and D-cut processing are also available if requested. Please contact KURODA with your orders. Model examples for finished shaft ends are described below.

**Model example:** Unfinished shaft ends (See left figure) → Finished shaft ends

GY3610ES-HUBR-3000A → GY3610ES-HUBR-2970X2830-CAY

→ Thread length  
→ Overall screw shaft length

Supported end	Fixed end
Applicable supported end support unit	Applicable fixed end support unit
----	BUT-30 (Round type)

### • Optional specifications

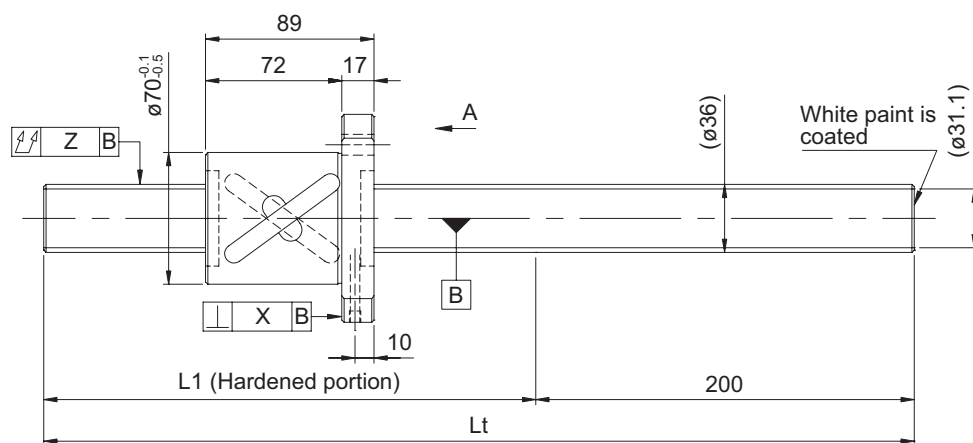
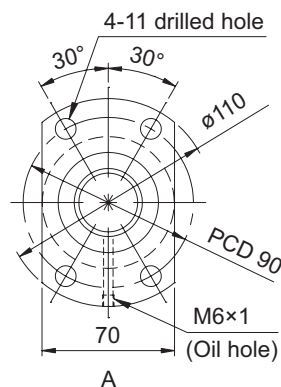
• Anticorrosive black coating (coating thickness: 1 to 2  $\mu\text{m}$ ) is available.

Lead accuracy	Accuracy of each part		Mass (kg)
Cumulative lead error	X	Z	
0.21/300	---	0.120	10.28
		0.240	18.25
		0.640	26.22

## GY series (Accuracy grade C10)

### • Ball screw specifications

Shaft diameter (mm) - Lead (mm)	36 - 20
Number of circuits / Thread direction	2.5 turns 2 circuits / Right-hand
Ball diameter (mm)	6.350
Root diameter (mm)	31.1
Series	GY
Basic dynamic load rating C (N)	35100
Basic static load rating C0 (N)	98200
Accuracy grade / Axial clearance symbol	C10 / Y
Axial clearance (mm)	0.200 or less
Preload torque (N·cm)	----
Recirculation system	Tube method
Wiper	Brush wiper
Lubricant	Alvania Grease S2
Phosphate coating	Screw shaft, nut



Model No. (Unfinished shaft ends)	L1	Lt	Maximum stroke (L1 - nut length)
GY3620ES-HUBR-1000A	800	1000	711
GY3620ES-HUBR-2000A	1800	2000	1711
GY3620ES-HUBR-3000A	2800	3000	2711

• At the time of delivery, grease is inserted inside of the nut, with rust-preventive oil also applied. Before and during use, apply lubricant where appropriate.

## Screw shaft diameter ø36, Lead 20 (Round nut)

### • Shaft end finish type

Standard rolled ball screws are available with KURODA's recommended shaft end finish types for each size.

Other than KURODA's recommended shaft end finish types described below, additional machining including keyways, tapped holes, and D-cut processing are also available if requested. Please contact KURODA with your orders. Model examples for finished shaft ends are described below.

**Model example:** Unfinished shaft ends (See left figure) → Finished shaft ends  
GY3620ES-HUBR-3000A → GY3620ES-HUBR-2970X2830-CAY

→ Thread length  
→ Overall screw shaft length

Supported end	Fixed end
Applicable supported end support unit ----	Applicable fixed end support unit BUT-30 (Round type)

### • Optional specifications

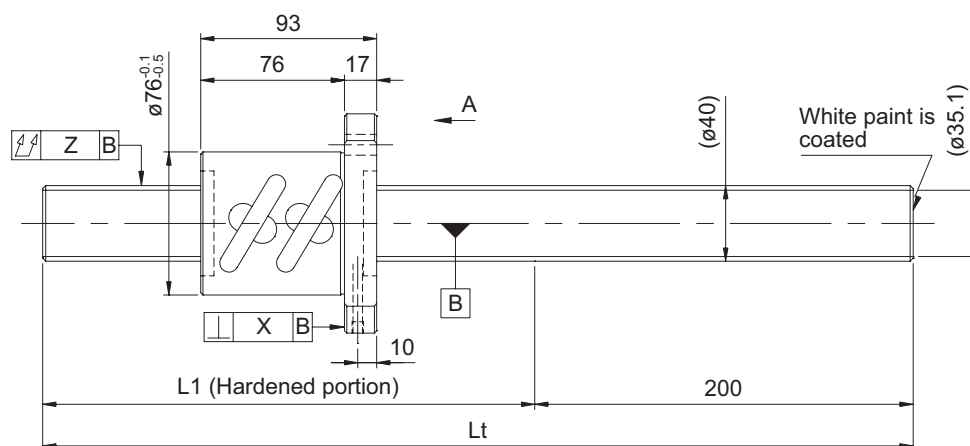
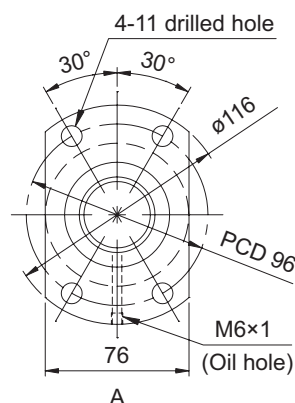
• Anticorrosive black coating (coating thickness: 1 to 2 μm) is available.

Lead accuracy	Accuracy of each part		Mass (kg)
Cumulative lead error	X	Z	
0.21/300	---	0.120	10.20
		0.240	18.17
		0.640	29.14

## GY series (Accuracy grade C10)

### • Ball screw specifications

Shaft diameter (mm) - Lead (mm)	40 - 10
Number of circuits / Thread direction	2.5 turns 2 circuits / Right-hand
Ball diameter (mm)	6.350
Root diameter (mm)	35.1
Series	GY
Basic dynamic load rating C (N)	37100
Basic static load rating C0 (N)	105600
Accuracy grade / Axial clearance symbol	C10 / Y
Axial clearance (mm)	0.200 or less
Preload torque (N·cm)	----
Recirculation system	Tube method
Wiper	Brush wiper
Lubricant	Alvania Grease S2
Phosphate coating	Screw shaft, nut



Model No. (Unfinished shaft ends)	L1	Lt	Maximum stroke (L1 - nut length)
GY4010ES-HUBR-2000A	1800	2000	1707
GY4010ES-HUBR-3000A	2800	3000	2707
GY4010ES-HUBR-4000A	3800	4000	3707

• At the time of delivery, grease is inserted inside of the nut, with rust-preventive oil also applied. Before and during use, apply lubricant where appropriate.

## Screw shaft diameter $\phi 40$ , Lead 10 (Round nut)

### • Shaft end finish type

Standard rolled ball screws are available with KUROMA's recommended shaft end finish types for each size.

Other than KUROMA's recommended shaft end finish types described below, additional machining including keyways, tapped holes, and D-cut processing are also available if requested. Please contact KUROMA with your orders. Model examples for finished shaft ends are described below.

**Model example:** Unfinished shaft ends (See left figure) → Finished shaft ends

GY4010ES-HUBR-4000A → GY4010ES-HUBR-3930X3753-CAY

Thread length  
Overall screw shaft length

Supported end	Fixed end
Applicable supported end support unit	Applicable fixed end support unit
----	BUT-35 (Round type)

### • Optional specifications

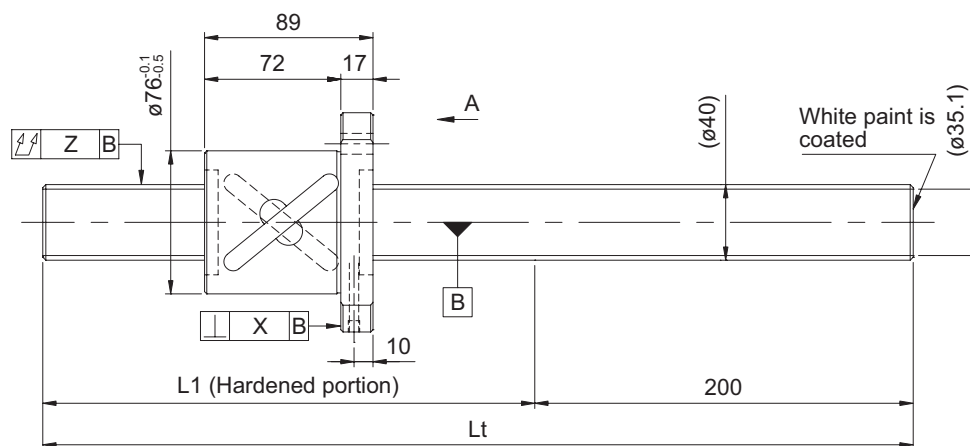
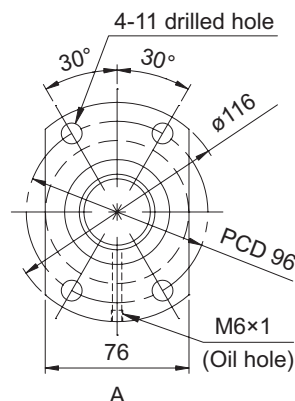
• Anticorrosive black coating (coating thickness: 1 to 2  $\mu\text{m}$ ) is available.

Lead accuracy	Accuracy of each part		Mass (kg)
Cumulative lead error	X	Z	
0.21/300	---	0.240	22.34
		0.400	32.18
		0.640	42.02

## GY series (Accuracy grade C10)

### • Ball screw specifications

Shaft diameter (mm) - Lead (mm)	40 - 20
Number of circuits / Thread direction	2.5 turns 2 circuits / Right-hand
Ball diameter (mm)	6.350
Root diameter (mm)	35.1
Series	GY
Basic dynamic load rating C (N)	37100
Basic static load rating C0 (N)	105600
Accuracy grade / Axial clearance symbol	C10 / Y
Axial clearance (mm)	0.200 or less
Preload torque (N·cm)	----
Recirculation system	Tube method
Wiper	Brush wiper
Lubricant	Alvania Grease S2
Phosphate coating	Screw shaft, nut



Model No. (Unfinished shaft ends)	L1	Lt	Maximum stroke (L1 - nut length)
GY4020ES-HUBR-2000A	1800	2000	1711
GY4020ES-HUBR-3000A	2800	3000	2711
GY4020ES-HUBR-4000A	3800	4000	3711

• At the time of delivery, grease is inserted inside of the nut, with rust-preventive oil also applied. Before and during use, apply lubricant where appropriate.

## Screw shaft diameter $\phi 40$ , Lead 20 (Round nut)

### • Shaft end finish type

Standard rolled ball screws are available with KUROMA's recommended shaft end finish types for each size.

Other than KUROMA's recommended shaft end finish types described below, additional machining including keyways, tapped holes, and D-cut processing are also available if requested. Please contact KUROMA with your orders. Model examples for finished shaft ends are described below.

**Model example:** Unfinished shaft ends (See left figure) → Finished shaft ends

GY4020ES-HUBR-4000A → GY4020ES-HUBR-3930X3753-CAY

→ Thread length  
→ Overall screw shaft length

Supported end	Fixed end
Applicable supported end support unit	Applicable fixed end support unit
----	BUT-35 (Round type)

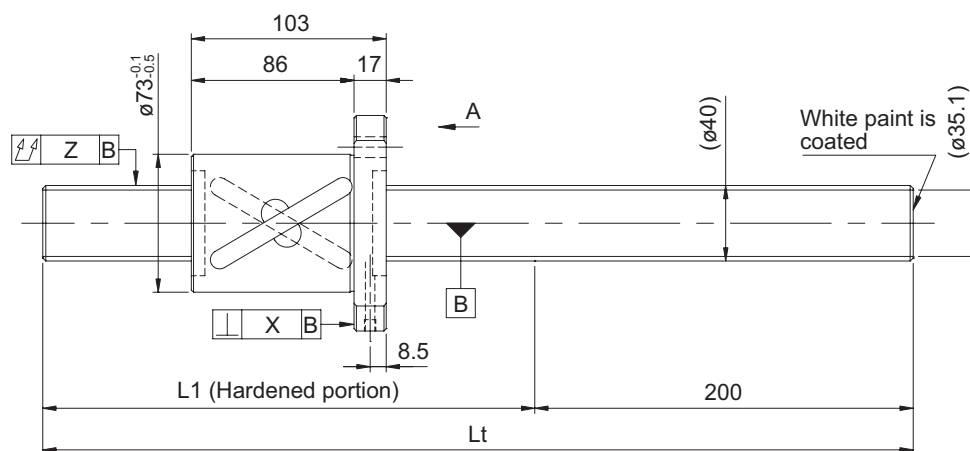
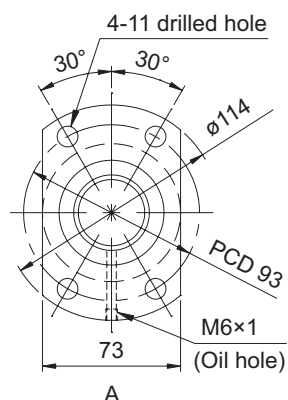
### • Optional specifications

• Anticorrosive black coating (coating thickness: 1 to 2  $\mu\text{m}$ ) is available.

Lead accuracy	Accuracy of each part		Mass (kg)
Cumulative lead error	X	Z	
0.21/300	---	0.240	22.25
		0.400	32.09
		0.640	41.93

**Screw shaft  
diameter Ø40**

Shaft diameter (mm) - Lead (mm)	40 - 40
Number of circuits / Thread direction	1.5 turns 2 circuits / Right-hand
Ball diameter (mm)	6.350
Root diameter (mm)	35.1
Series	GY
Basic dynamic load rating C (N)	23900
Basic static load rating C0 (N)	66900
Accuracy grade / Axial clearance symbol	C10 / Y
Axial clearance (mm)	0.200 or less
Preload torque (N·cm)	----
Recirculation system	Tube method
Wiper	Brush wiper
Lubricant	Alvania Grease S2
Phosphate coating	Screw shaft, nut



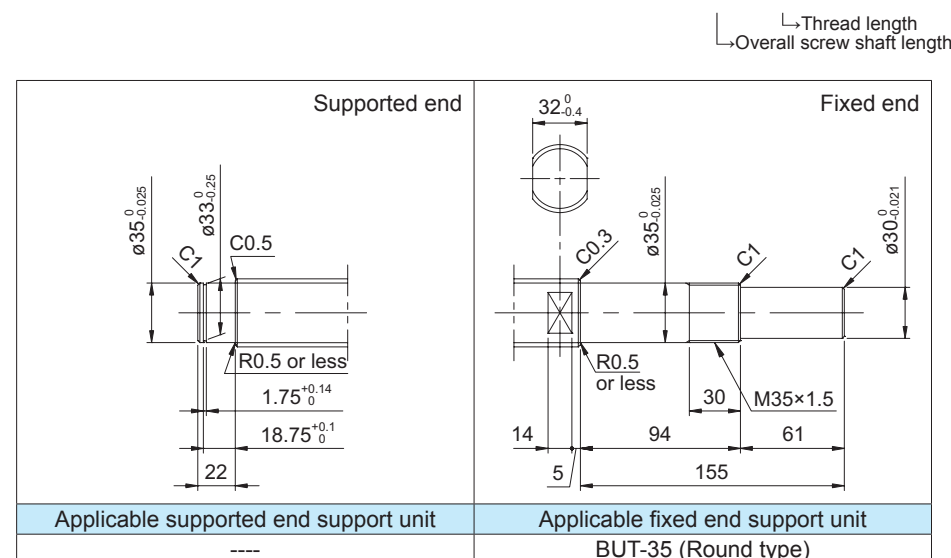
Model No. (Unfinished shaft ends)	L1	Lt	Maximum stroke (L1 - nut length)
GY4040BS-HUBR-2000A	1800	2000	1697
GY4040BS-HUBR-3000A	2800	3000	2697
GY4040BS-HUBR-4000A	3800	4000	3697

**KURODA**  
**JENATEC**

**Screw shaft  
diameter Ø40**

Standard rolled ball screws are available with KURODA's recommended shaft end finish types for each size.

**Model example:** Unfinished shaft ends (See left figure) → Finished shaft ends  
GY4040BS-HUBR-4000A → GY4040BS-HUBR-3930X3753-CAY



- Anticorrosive black coating (coating thickness: 1 to 2  $\mu\text{m}$ ) is available.

Lead accuracy	Accuracy of each part		Mass (kg)
Cumulative lead error	X	Z	
0.21/300	---	0.240	22.29
		0.400	32.13
		0.640	41.97